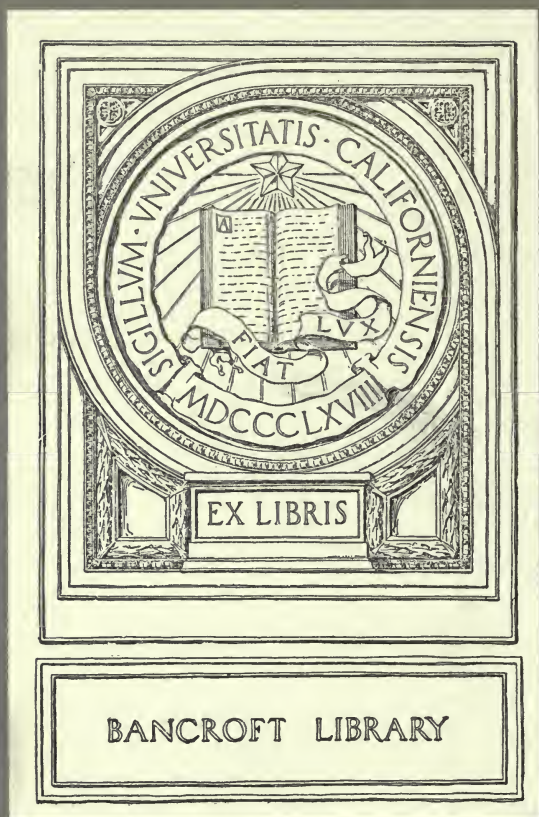


<http://stores.ebay.com/Ancestry-Found>



811518

MEYER'S Business Directory



PHCENIX, ARIZONA,
1888.

GEORGE E. LORING,
HATTER AND FURNISHER.

AGENT FOR
E. & W.
COLLARS
AND
CUFFS.



Flannel Shirts.

Dunlap Hats,

AND A
FULL LINE OF

STETSON'S

Celebrated

Cow Boy
HATS.

PHCENIX, - - - - ARIZONA.

The Pioneer House

GOLDMAN & CO.

Importers and Dealers in

General Merchandise.

*Anything from a Needle to a Threshing Machine
you can find in our stock at Prices that
DEFY COMPETITION.*

Goldman & Co's Liquor Department

— IS THE —

Only Wholesale Liquor House IN ARIZONA.

San Francisco Prices Guaranteed.

AGENTS FOR

*Lemp's Brewing Co.; Anheuser-Busch Bottled
Beer; Gamess Private Stock Whisky;
Mayfield Whisky.*

Gate's KEY WEST Cigars.

MEYER'S BUSINESS DIRECTORY

OF THE CITY OF



PHOENIX, ARIZONA.

CONTAINING A

*Classified Business and Professional Guide; a List of
all the City and County and Federal Officials;
Correct Tables of Railroad Fares, Ex-
press Tariffs and Telegraph
Tolls to All Points of
the Compass,*

AND OTHER VALUABLE INFORMATION.

COMPILED AND PUBLISHED BY

A. LEONARD MEYER,
PHOENIX, ARIZONA,

1888.

THE CITY OF PHOENIX.

* Embowered in the mass of verdant foliage, which line every street and surround every dwelling-place, adorned by a wealth of flowers and shrubbery, and with beautiful gardens, vineyards and orchards about every suburban home, Phoenix can justly boast of being one of the handsomest little cities on the Pacific Slope. Through every street streams of pure, clear water are conducted along the edge of the sidewalks, cooling the atmosphere during the summer months, and bringing life and verdure and productiveness to flowers and fruits and shade trees. The ground upon which the town is built has a gradual slope toward the Salt river, distant about one mile. The original town-site embraces one-half section—a mile in length by a half-mile in width. To this, however, have been added during the past year more than a dozen additions. Situated very near the center of the great valley, and about thirty-five miles north of Maricopa station, on the Southern Pacific Railroad, the site of the city is everything that could be desired. The facilities for drainage toward the river are perfect, as are also those for the establishment of a comprehensive water supply system. The important question of sanitation is therefore settled for all time, and the healthfulness of the city assured. The grading and paving of streets, and the construction of sidewalks will be here an easy task, and the cost reduced to a minimum owing to the level contour of the surface.

THE BUILDINGS,

Public and private, of this rapidly-growing young city, are creditable to the enterprise of its people. The old adobe of the early pioneer is fast disappearing before the march of progress. The streets cross each other at right angles, and there are three plazas, or public squares. In one of these the county court-house stands, a commodious brick structure of two stories, crowned by a handsome clock tower. The other plaza will soon be occupied by a city hall. It will be of brick and stone, two stories in height. Adorned with shrubbery, grass and shade trees, these squares will be an attractive feature of the town.

The public school-house is a roomy and comfortable edifice of brick, and accommodates at present over 500 pupils. But so rapid is the increase in population that the school trustees have decided to erect at once three

—*The following sketch is from the facile pen of Hon. Patrick Hamilton, recently published in the Albuquerque *Democrat*, with such minor changes as the march of progress have made necessary.

C. Eschman & Co.



APOTHECARIES

N. W. Corner

Center and Washington Streets,
PHOENIX, A. T.

A FULL LINE OF ALL CLASSES OF GOODS
USUALLY FOUND IN A FIRST-CLASS
DRUG STORE.

PRESCRIPTIONS CAREFULLY PREPARED, Day or Night.

more school buildings, which will give the city four public schools, or one to each ward.

Washington street, which runs from east to west through the center of the city, is the main business thoroughfare. A mile in length—exclusive of additions—and 120 feet in width, it can boast of many handsome mercantile establishments. These are mostly of brick, many of them carrying immense stocks and doing a volume of business, running into the hundreds of thousands annually, besides supplying the immense valley, of which it is the center. The trade of Phoenix embraces all the mining camps and cattle ranges within a radius of seventy-five miles.

Already the young city is supplied with many churches, nearly all the leading Christian sects being represented. Catholics, Methodists, (north and south) Presbyterians, Baptists, Episcopalians and Congregationalists. have places of worship, the Catholic and Methodist churches being commodious edifices. The secret orders are prosperous here. The Masons, Odd Fellows, Order of United Workmen, Knights of Pythias, Red Men, Chosen Friends and Good Templars, have flourishing lodges. There is a Library Association, supported by popular subscriptions, and a number of social and charitable organizations attached to the several churches. With such a showing for moral and intellectual progress, the charge of "general cussedness" so often heard against the "rowdy west," cannot affect Phoenix.

The newspaper is the truest mirror of a people's moral and material condition. In this respect Phoenix need not fear comparison with more pretentious places. The *Arizonian*, *Herald* and *Gazette* issue daily and weekly editions, while the *Advance* is published once a week. A perusal of their local and advertising columns will give an outsider an excellent idea of the growth and prosperity of the town and of the enterprise and public spirit of its citizens. That the people of Phoenix appreciate the work of its press is evinced by the liberal support which they extend to it.

THE POPULATION

Of this coming city of the southwest is estimated at 5,000, which is being rapidly augmented since the completion of the branch railroad. Three banks, with a heavy capitalization, are required to meet its steady growing business. There are several hotels, and yet another, a large brick structure, will be finished within two months. There are two manufactories of artificial ice, a large flouring mill, a planing mill and a meat packing establishment near the town. A three-story opera house, is recently com-

DILLON & KENEALY, Leaders in CLOTHING.

THE NATIONAL BANK of ARIZONA, PHOENIX, ARIZONA.

Capital Paid Up, - - \$100,000.

DIRECTORS:

M. W. KALES, SOL. LEWIS, J. Y. T. SMITH,
CHAS. GOLDMAN, GEO. W. HOADLEY.

CORRESPONDENTS:

THE BANK OF CALIFORNIA, San Francisco. AGENCY OF BANK OF
CALIFORNIA, New York. Messrs. N. M. ROTHS-
CHILD & SONS, London.

M. W. KALES,	SOL. LEWIS,	GEO. W. HOADLEY,
<i>President.</i>	<i>Vice-President.</i>	<i>Cashier.</i>

The VALLEY BANK of PHOENIX ARIZONA.

Paid Up Capital,	-	-	\$50,000.
Surplus,	-	-	13,000.

OFFICERS:

ANDREW CRAWFORD, President. WM. CHRISTY, Cashier.
E. J. BENNITT, Assistant Cashier.

DIRECTORS:

A. CRAWFORD, F. C. HATCH, M.-H. SHERMAN,
WM. CHRISTY, E. J. BENNITT.

CORRESPONDENTS: PACIFIC BANK, San Francisco. FIRST NATIONAL
BANK, Los Angeles. AMERICAN EXCHANGE NATIONAL BANK, New York
City. S. A. KEAN & CO., Chicago.

Drafts Drawn on all the Principal Cities of Europe.

pleted. Another hotel of 200 hundred rooms is now projected, and will soon be built. The city is lighted by gas, and will soon have electric light, a company having been organized for that purpose. Street cars traverse the city and several of the additions. There is an excellent fire department, supplied with the latest improved apparatus.

In a word, Phoenix has fairly entered upon the road which leads to prosperity, and is rapidly forging ahead. Her's will be no mushroom growth, no ephemeral "boom." Sustained and supported by the vast tract of rich and productive soil which surrounds it on all sides, with abundance of water and a perfect climate, she can look to the future with serene confidence. She has the unfailing resources which build cities and support prosperous communities. Now that her superb gifts and advantages are becoming known, property values are rapidly rising. The past six months have witnessed many improvements both in the city and suburbs, and prices have fully doubled within that period. There has been no feverish "boom," but a steady advancement, born of confidence in the future. The field for the investor or speculator is an inviting one, and many fortunes will be made in this valley in real estate within the next twelve months. At present there are about fifteen firms engaged in the business, which will give some idea of the transfers made. Lots in this city, which could be had for \$150 six months ago, now command \$500 and \$600, and so it is with suburban tracts and business locations. This year will bring to the valley many visitors from the east and west, and transactions in realty promise to be lively enough to suit the most sanguine "boomer."

"THE GARDEN OF THE SOUTHWEST,"

Is the name which has not been inaptly applied to this vale of beauty and productiveness. Columns might be filled descriptive of the many gifts which generous nature has showered upon it. There is no necessity for the writer to indulge in hyperbole or exaggeration. The plain facts speak louder than any highly painted picture. Only yesterday reclaimed from the desert, its fruitful fields, orchards and vineyards are already a glorious promise of the future. When its hundreds of thousands of untilled acres will smile beneath their burdens of the fruits of every clime; when handsome houses with their wealth, shrubbery and flowers shall adorn the landscape; when the air with its musical feathered songsters and heavy with odors as delicious as those from the isles of the eastern seas, and when over all are the skies of a cloudless clime, then indeed may the visitor exclaim—"if there be an elysium on earth, it is this, it is this."

DILLON & KENEALY, Leaders in Hats.

H. WOHLER & CO.,

Dealers in all kinds of

Furniture and House Furnishing Goods.

UPHOLSTERING and REPAIRING

A SPECIALTY.

A. P. PETIT,
Architect and Practical Builder,

OFFICE AND RESIDENCE:

Cor. Madison and Papago Sts., Phoenix, Arizona.

Plans and Specifications, with Estimates of Building of any class furnished at shortest notice. Will superintend the construction of building on moderate terms, with strict attention.

O. J. THIBODO, M. D.

PHYSICIAN

—AND—



DRUGGIST,

—AND DEALER IN—

Drugs, Medicines, Toilet Articles,
Perfumery, Brushes, Etc.

PHOENIX, - - - ARIZONA.

Opposite Post Office.

CITY OF PHŒNIX.

MUNICIPAL DIRECTORY.

De Forest Porter	Mayor
John R. Loosley.)	1st Ward
Sam'l Franklin ..)	2d Ward
Geo. H. Rothrock)	3d Ward
Lincoln Fowler ..)	4th Ward
Frank Baxter.....	Recorder
A. Leonard Meyer	Treasurer
Frank D. Wells.....	Marshal
A. C. Baker	Attorney
Dr. T. D. McGlasson.....	Health Officer
Andrew Barry	Engineer
Jas. M. Creighton.....	Architect
Henry Garfias	Zanjero

PHŒNIX FIRE DEPARTMENT.

F. M. Czarnowski.....	Chief Engineer
Frank D. Wells.....	Assistant Chief Engineer

PHŒNIX ENGINE Co. No. 1.

W. J. Carrier	Foreman
W. F. Schaller	1st Assistant Foreman
T. L. Davenport	2d Assistant Foreman
John Beck	Secretary
E. J. Bennitt.....	Treasurer

PIONEER HOSE Co. No. 1.

W. H. Levins.....	Foreman
A. E. Hinton	1st Assistant Foreman
Wm. Black	2d Assistant Foreman

YUCATEC HOSE Co. No. 2.

C. Ceschetti.....	Foreman
Fernando Serrano.....	1st Assistant Foreman
W. Scott.....	2d Assistant Foreman

DILLON & KENEALY, Leaders in DRY GOODS.

GEO. PRICE,
The Leading Tobacconist.

Go to Geo. Price's for FINE CIGARS,
NEXT DOOR TO VALLEY BANK, PHOENIX.

M. JACOBS.

H. GOODMAN.

M. JACOBS & CO.,
DEALERS IN
GENERAL MERCHANDISE,
PHOENIX, ARIZONA.



WILL. J. CURRY,
PRACTICAL
Watchmaker and Jeweler,
—DEALER IN FINE—
WATCHES, CLOCKS AND JEWELRY.

A Full Line of FINE SPECTACLES and EYE GLASSES. Fine WATCH
REPAIRING a Specialty. All Work Warranted.

Washington Street, Near Post Office, Phoenix, Arizona.

Miss E. A. Blythe,
FASHIONABLE
Milliner and Dressmaker.
Carries a Full Stock of Millinery Goods.

Washington Street, Two Doors East of Maricopa Street,
PHOENIX, ARIZONA.

 AZTEC HOOK AND LADDER CO. No. 1.

J. L. Grant	Foreman
T. L. Schultz	1st Assistant Foreman
M. B. Fleishman	2d Assistant Foreman

 FEDERAL AND COUNTY OFFICERS.

Hon. W. W. Porter	District Judge
J. Elliott Walker	Clerk
J. W. Crenshaw	Court Commissioner
Frank Cox	District Attorney
	Deputy U. S. Attorney
W. M. Breakenridge	Deputy U. S. Marshal
Joseph Campbell	Probate Judge
A. J. Halbert	Sheriff
Geo. F. Kemper	Treasurer
Henry L. Wharton	Recorder
Jno. B. Montgomery	} Supervisors
H. H. Linville	
N. Petersen	
J. L. B. Alexander	Clerk Board of Supervisors
Jas. Richards	Justice of the Peace, Phoenix Precinct
W. T. Woods	Justice of the Peace, Phoenix Precinct
Wm. Blankenship	Constable, Phoenix Precinct
H. C. McDonald	Constable, Phoenix Precinct

 BOARD OF DIRECTORS TERRITORIAL INSANE ASYLUM.

E. H. Hiller	Chairman
Emil Ganz	
(Vacancy)	
J. L. B. Alexander	Clerk
Dr. O. L. Mahoney	Superintendent

 ARIZONA INDUSTRIAL EXPOSITION ASSOCIATION.

T. J. Trask	President
Valley Bank	Treasurer
J. McMillan	Secretary

DILLON & KENEALY, Leaders in Boots and Shoes.

PHOENIX

Arctic Ice Works

— AND —

COLD STORAGE ROOMS.



Works, Near M. & P. R. R. DEPOT.



Ice Made from Distilled and Filtered Water.

For Terms for Storage and Ice Contracts,

APPLY TO

P. MINOR,

Proprietor and Manager Arctic Ice Works,

PHOENIX, ARIZONA.

MARICOPA COUNTY IMMIGRATION UNION.

T. J. Trask	President
Valley Bank	Treasurer
T. E. Farish.....	Secretary

SECRET SOCIETIES.

MASONIC.

- Arizona Chapter No. 1, R. A. M. Stated convocation on second Tuesday each month. F. A. Shaw, H. P.; J. B. Creamer, Secretary.
- Arizona Lodge No. 2, F. & A. M. Stated meetings on first Tuesday each month. J. Y. T. Smith, W. M.; J. B. Creamer, Secretary.
- Alsap Chapter No. 3, O. E. S. Stated meetings second and fourth Wednesdays each month. Mrs. A. M. Morford, W. M.; J. Y. T. Smith, Secretary.

A. O. U. W.

- Endymion Legion No. 5, A. O. U. W. Meets second and fourth Wednesday each month. Joseph Campbell, Commander, J. L. B. Alexander, Secretary.
- Phoenix Lodge No. 5, A. O. U. W. Meets first and third Wednesday of each month. D. H. Recarte, M. W.; Joseph Campbell, Recorder.

I. O. O. F.

- Canton Arizona No. 1, Patriarchs Militant, I. O. O. F. Meets third Tuesday evening each month. P. K. Hickey, Commandant; D. A. Reed, Clerk.
- Floral Encampment No. 2, I. O. O. F. Meets second and fourth Tuesday evenings each month. P. K. Hickey, C. P.; D. A. Reed, Scribe.
- Phoenix Lodge No. 2, I. O. O. F. Meets every Saturday evening. Robert Kern, N. G.; D. A. Reed, Secretary.
- Arizona Degree Lodge No. 2, Daughters of Rebekah. Meets second and fourth Thursday evenings each month. Mrs. A. Schwartz, N. G.; C. S. Scott, Secretary.

DILLON & KENEALY, One Price Square Dealers.

ARIZONA

Real Estate and Mining Exchange,

G. W. INGALLS & CO.

Opera House, - - Phoenix, Arizona.

Real Estate Bought and Sold.

Particular attention given to the sale of Country Property, including Stock Ranges and lands suitable for colonization. Mines reported upon and assessment work of non-residents attended to. Catalogues of properties furnished on application. Abstracts furnished and loans negotiated. Largest collection of Pre-historic Indian Curiosities and many specimens of Arizona mineral and other productions, on exhibition at our office, which strangers are invited to examine.

Paradise Nursery,

Directly North of Phoenix,

On Arizona Canal.

Orange Trees and Apricots a Specialty.

ORCHARDS and VINEYARDS

Planted by Contract or Otherwise.

Mr. TURNER is an experienced nurseryman and orchardist, and only reliable trees are sent out. Also a large stock of PALMS, PEPPERS, TEXAS UMBRELLA TREES, ASH and other ornamental trees and shrubs.

D. TURNER, Proprietor.

I. O. G. T.

Garden Valley Lodge No. 1, I. O. G. T. Meets every Monday evening.
T. L. Schultz, C. T.; W. T. Woods, Jr., Secretary.

G. A. R.

John W. Owen Post No. 83, G. A. R. Meets in Masonic Hall on first
Wednesday of every month. J. B. Creamer, P. C.; Allen T. Bird, Adj.

KNIGHTS OF PYTHIAS.

Phoenix Lodge No. 2. Meets on the first and third Fridays of each
month in Pythian Hall. Webster Street, C. C.; J. A. Agard, K. of R.

O. C. F.

Phoenix Council No. 1. Meets first and third Thursdays of each month
at Pythian Hall. Mrs. E. A. Ingalls, C. C.; Withrop Sears, Secretary.

U. O. OF H.

Cactus Lodge No. 137. Meets second and fourth Fridays of each month.
J. E. Wharton, President; E. Irvine, Secretary.

PHOENIX TYPOGRAPHICAL UNION, NO. 237.

Meets first Sunday in each month. Curt. W. Miller, President; J. E.
Bland, Secretary.

P. O. S. OF A.

Washington Camp No. 2. Meets every Thursday night in Masonic
Hall. Robert Kern, President; L. H. Chalmers, Secretary.

DILLON & KENEALY, Sole Agents for Jas. Mean's \$3 Shoes.

PHOENIX * HOTEL,

BOB KERN, - - - Proprietor.



Enlarged and Improved.

New Furniture for the Year 1888



I shall pay special attention to the Dining Room, and all guests may depend on satisfactory attention, and a CUISINE that will embrace all delicacies obtainable.

NEATNESS,

PROMPTNESS,

ATTENTION.

Washington Street,

PHOENIX, ARIZONA.

CLASSIFIED BUSINESS DIRECTORY CITY OF PHOENIX.

Accountants

Hickey, P K
Reed, D A
Neustadter, I
Moore, Chas H

Amusements Places of

Patton Opera House
Garden City Theatre
Roller Skating Rink

Apothecaries (*see Druggists*)

Architects

Creighton, J M
McGinnis, W A
Petit, A P

Artists' Materials

Catton Brothers
Woods, W T, Jr

Attorneys at Law

Alexander, H N
Baker & Campbell
Chalmers, L H
Churchill, Clark
Cox, Frank I
Cox, Ivy H
Crenshaw, J W
Edwards, E J
Ford, J B
Goodrich, Smith, Street & Good- [rich
Hancock, Wm A
Lemon & McCabe
Lighthizer, H B
Millay & Hine
Perley, Peleg S
Pinney, D H
Porter & Baxter
Wallace, D H

Auctioneers

Blankenship, J W
Mauk, G W

Bakeries

French Bakery
Phoenix Bakery
Vienna Bakery

Banks

Hartford Banking Co
National Bank of Arizona
Valley Bank, The

Barbers

Cota, Francisco
Lohman, E
Luhrs, J C H
McMurray, H E
Shumaker, H
Romero, Lazaro

Baths

Lohman, E
Shumaker, H
Swimming Bath

Bill Posters

Levins, Wm H
Mills, J H

Billiard Saloons

Commercial Hotel
Ceschetti & Bersanti
Luke & Johnson

Blacksmiths

Blake, W H
Burger, Jno H
Carrier, W J & Co

DILLON & KENEALY, Emporium for FINE SHOES.

L. H. GOODRICH,
RESIDENT DENTIST,

OFFICE:

Center Street, Opposite Goldman's, PHOENIX, ARIZONA.

L. H. CHALMERS,

Attorney-at-Law,

Rooms 7 and 9, Thibodo Building, PHOENIX, ARIZONA.

Pioneer Wine Vaults

— AND —

SAMPLE ROOMS.

*The Only Reliable House at which to get Pure Wines and
Liquors for Family and Medicinal Purposes.*

PORTER BUILDING,

Center and Washington Sts., PHOENIX, ARIZONA.

J. M. MONTANO, - - Proprietor.

OTIS ANDREWS & CO.,

Wholesale and Retail

FRUIT STORE

*Packing and Shipping Salt River Valley Fruits and
Produce A SPECIALTY.*

GREEN GROCERIES, TOBACCO, FISH, GAME, Etc.

O. K. FRUIT STORE,

WASHINGTON STREET, Phoenix, Arizona.

Gardiner, J J & Co
Hulbert, W P
Nichols & Murray
McCarthy, James H
Orozco & Vasquez

Boarding Houses

Harriman, Mrs J
Knapp, Mrs C H
Philes, Mrs C E
Whitesides, Mrs R

Booksellers (*see News Depots*)

Bowling Alleys

Brix, Peter

Breweries

Arcade Brewery

Brick Manufacturers

Foushee, A S
Cox, M B
Marsh, J H A

Builders (*see Carpenters and Builders*)

Butchers

Amando, Manuel
Balsz & Co
Johnson, W M
Kelly & Marlow
Murray, D L & Co

Canal Companies

Arizona Canal Co
Buckeye Canal Co
Grand Canal Co
Highland Canal Co
Maricopa Canal Co
Salt River Valley Canal Co

Candy Manufacturers

Thomas, E W

Carriage and Wagon Makers

Moss, F B
McDonald, A
Nichols & Murray

Carriage and Wagon Repositories

Kemp, H E & Co
Goldman & Co

Carpenters and Builders

Bond & Hayden
Bury, C H
Byers, J S & Son
Creighton, J M
Gardiner, J J & Co
Harriman, J
Hershey, E S
Mills, C W
Patton, S E
Schriver, J M
Bridgeman, E E
Duhring, C
Collier, W C
Thomas, J H

Chinese Stores

See Yuen
Sam Wo Chung
Woh Lung & Co
Lem Quee
Hang Hong

Cigars and Tobacco

Hardy, Alex
Price, Geo
Seelig, T H

Civil Engineers

Barry, A
Breakenridge, Wm M
Davidson, S A
Hine, T W
Patrick, H R
Trott, F P

Clergymen

Cooper, E K (*Baptist*)
Fulton, S D (*Presbyterian*)
Jouvencean, F (*Catholic*)
McMullen, Thos H (*Christian*)
Norton, N F (*M E*)
Pearson, R W (*Episcopalian*)
Wright, C C (*M E South*)

Clothing (*see Dry Goods*)

Commission Merchants

Reynolds, J S

Commissioners of Deeds

Farish, T E

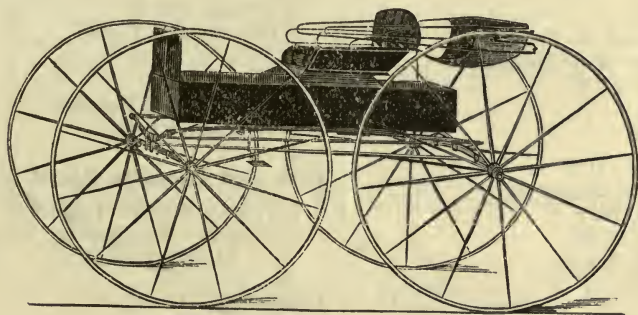
DILLON & KENEALY, Ladies' Fine French Shoes at \$3.50.

HENRY E. KEMP & CO.

PHCENIX, ARIZONA,

Hardware, Wagons, Buggies

—AND—



Agricultural Implements

BY THE CARLOAD.

AGENTS FOR

Columbus Buggies,
Bain Farm Wagons,
Racine Wagons and Carriages,
John Deere Plows,
Acme Harrows and
McCormick Mowers.

WE HAVE PURCHASED THE STOCK OF THE

PHCENIX HARDWARE CO.

And are Making Large Additions.

Contractors

Foushee, A S
Harmsen, B
Myers, L W
(See also *Carpenters and Builders*)

Copyists

Barbey, L E
Morris, C H
Neustadter, I

Dentists

Goodrich, L H
Happy Hour Dental Co
Small, K W

Draymen

Bewley, D S
Burnett, James K
Cable, W S
Coyle, P H
Green, Martin
McKean, F J

Dressmakers

Blythe, Mrs E A
Glassford, Miss M

Druggists

Eschman, C L & Co
Thibodo, O J

Dry Goods

Dillon & Kenealy
Ellis & Brown
Goldman & Co
Jacobs, M & Co
Winters, E H & Co

Employment Offices

Gallardo, Antonio G

Express

Wells, Fargo & Co

Fish Markets

Andrews & Hattox

Flour Mills

Smith, J Y T

Fruit Dealers

Andrews, Otis & Co
Dorris, R B
Donofrio, C
Micca, G
Steinegger, Alex
Thomas, E W
(See also *Grocers*)

Furnishing Goods

Asher, A
Loring, Geo E
(See also *Dry Goods*)

Furniture

Schoenfeld & Heyman
Wohler, H & Co

Gas and Electric Light Co's

Phoenix Electric Light Co
Phoenix Illuminating Gas and
Electric Light Co

Grocers

Farley & Grant
Goldberg, H
Goldman & Co
Jacobs, M & Co
Jeffries, L H
McNulty, W F
Sweeney & Recarte
Tauton & Kellner
Trask & Kays
Whepley, W L

Gunsmiths

Spangenberg, G F

Hackmen

Marshall, Alex

Hardware

Coon, Burtis & Coon
Goldman & Co
Kemp, Henry E & Co
Long, J B
Fowler, C D
Pesqueira, E

Harness and Saddlery

Andre, Robt G
Tulburt, H L

DILLON & KENEALY, Leaders in CLOTHING.

PHOENIX ICE FACTORY.

S. D. LOUNT, Proprietor.

COR. PINAL & WASHINGTON STS.,
PHOENIX, ARIZONA.

MARICOPA Loan and Trust Company.

MONEY LOANED

On Real and Personal Security, long or short time,
as desired.

Correspondents and Eastern Agents: Northern Banking Co., Portland, Me.

JOSEPH W. SPAULDING, President,	-	Portland, Me.
JERRY MILLAY, General Manager,	-	Phoenix, Arizona.
MILFORD E. SPAULDING, Cashier,	-	Phoenix, Arizona.

Hatters

Loring, Geo E
(See also Dry Goods)

Horse Shoers (see *Blacksmiths*)**Hospitals**

Maricopa Co Hospital
Terr Asylum for the Insane

Hotels and Lodging Houses

Brown House
Commercial Hotel
Lemon Hotel
Phoenix Hotel
Gregory House
Gilbert Lodging House
Harriman Lodging House

Ice Factories

Lount, S D & Son
Minor, P

Insurance Agents

Bennett, E J
Hickey Bros
Fickas & Farish
Finch, J H
Kales, M W

Interpreters

Barbey, L E (*French*)
Holland, Jos (*Chinese*)
Gallardo, A G (*Spanish*)
Righetti, J P (*Italian*) [*copa*]
Morgan, Henry (*Pima and Mari-*

Japanese Bazaars

Lem Que
Hang Hong

Jewelers

Curry, W J
Humphrey, R J
Joyeau, Victor
Nilson, P F

Laundries

Phoenix Steam Laundry

Laundries Chinese

Wing Lee
Wan Sing
Quong Lee

Gee Hop
Sing Lee
Sam Wing
Chung Hing
Fang Sang
Wing Hi
Quong Woh

Lawyers (see *Attorneys at Law*)**Libraries**

Phoenix Library Association
W C T U Library

Liquor Dealers, Wholesale

Goldman & Co
R Ruben, Son & Co
Ganz, E
Montano, J M

Liquor Dealers, Retail

Barnard, Geo W
Brix, Peter
Ceschetti & Bersanti
Daneri, Estefano
Ganz, E
Jensen, J H W
Kern, Robt
Loosley, J R
Luke & Johnson
Luke, John
Montano, J M
McNamara J M
Martini, J
Pimm & Butler
Pawley, James
Righetti, James
Sanders, M M
Short, O A
Thalheimer, J

Livery Stables

Herrick & Luhrs
Fuqua, Frank
Grant, J L
Gibson, J M
McCann, W S
Ward, J L & Sons

Locksmiths

Byers, J S
Spangenberg, G F

DILLON & KENEALY, Leaders in Hats.

<http://stores.ebay.com/Ancestry-Found>

PHOENIX BAKERY, Confectionery and Ice Cream



PARLORS,

MANUFACTURERS OF

Candies and all kinds of Confectionery.

CARRY A FULL LINE OF

NUTS, FRESH FRUITS, BREAD, ROLLS, BUNS,
*All kinds of Pies, which are baked and
delivered free, daily, to all
parts of the City.*

WE ALSO CARRY THE

Choicest Brands of Cigars, Smoking & Chewing Tobacco.

PORTER BUILDING, PHOENIX, ARIZONA.

LEWIS & HERLICK, - - Proprietors.

E. PESQUEIRA,

DEALER IN

STOVES, TINWARE, GRANITE
And Agate Ironware, Etc., Etc.

*Roofing and Gas Fitting receives our special and careful attention.
Driven Wells a Specialty.*

East Side of Capital Plaza, - Phoenix, Arizona.

E. H. THOMAS,

CANDY MANUFACTURER, CONFECTIONER,

AND DEALER IN

FRESH FRUITS, NUTS, CIGARS AND TOBACCO.

ICE CREAM, SODA WATER & FRESH OYSTERS
IN THEIR SEASON.

Washington Street, opposite City Hall,

PHOENIX, ARIZONA.

Lumber Yards

Blinn, L W & Co
 Gregory, J M
 Ryder, H W

Lunch Counters

Butler, Ben
 Schlessinger, S V

Meat Markets (*see Butchers*)**Miscellaneous Corporations**

(*Not otherwise classified*)

Arizona Improvement Co
 Phoenix Street Railway Co
 Phoenix City Water Works Co
 Maricopa Co Immigration Union
 Maricopa Loan & Trust Co
 Arizona Indust'l Exposit'n Asse'n
 Maricopa Brownstone Quarry Co
 Maricopa Vineyard Co
 Valley Abstract Co

Milk Dealers

Hurley, C C
 Kellogg, Wm
 Montgomery, J B

Milliners

Blythe, Mrs E A
 Curtis, Mrs N J

Mineral Water

Josselyn & Smyley

Mining Companies

Phoenix Mining Co
 Union Mining Co [M & M Co
 Trinidad and Castle Creek
 Clarence Ruby Gold M & M Co

Music Teachers

Shook, Prof L B
 Schulenburg, Prof Ad

News Depots

Catton Bros
 Woods, W T, Jr

Newspapers

Arizona Gazette (*daily & weekly*)
 Arizonan, The (*daily & weekly*)
 Phoenix Herald (*daily & weekly*)
 Phoenix Weekly Advance

Notaries Public

Baxter, Frank
 Cox, Frank
 Chalmers, L H
 Fickas, B A
 Fowler, L
 Franklin, A M
 Fulwiler, W D
 Gallardo, A G
 Hickey, Jno J
 Hoadley, Geo W
 Hickey, P K
 Hirschfeld, G H
 Hancock, Wm A
 Ingalls, G W
 Martin, Geo T
 Perley, P S
 Reed, D A
 Utley, A A
 Walker, J W
 Wallace, D H

Nurseries

Garden City Nursery,
 Devereux, F B, prop
 Phoenix Nursery,
 Farrington, R E, prop
 Paradise Nursery, Turner, D, prop
 Collier's Nursery, Collier, W C, agt

Oyster Saloons

Thomas, E W
 Steinegger, A

Painters

Fritz, the Painter
 Rixen, Henry
 Sears, Winthrop
 White, Jno Q

Photographers

Catton, C W
 Rothrock, G H

Physicians

Pourquie, L
 Hong Kong, (*Chinese*)
 Hughes & McGlasson
 Ingalls, Mrs E A
 Lightburne, R E
 McDougall, E
 Osborne, R T
 Rosson, R L

L. W. BLINN Lumber Company.

PHOENIX BRANCH.

L. W. BLINN, General Manager, - - Tombstone, Arizona.
SAN FRANCISCO OFFICE, - - - 4 California Street.

✦ LUMBER ✦

Fancy and Plain Doors,
Sash, Blinds,
Lime, Hair,
Cement, Plaster,
Laths,
Wood Ornaments,
And Cut and Embossed Fancy Glass.

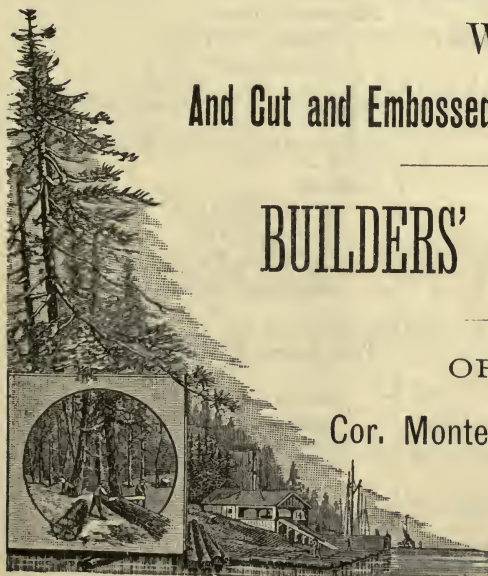
BUILDERS' HARDWARE.

OFFICE,

Cor. Montezuma and Adams Sts.

Yards, on Tonto St.,

NEAR M. & P. R. R. DEPOT.



Stern, L
 Thibodo, O J
 Wharton, J E
 Mahoney, O L
 Mahoney, Mrs Virginia

Piano Dealers

Redeuil, A
 Shook, L B

Planing Mills

Gardiner, J J & Co

Plasterers

Atkinson, J P
 Harmsen, B
 Evans, Henry

Printing Offices (*see Newspapers*)

Produce and Vegetables

(*See Grocers.*)

Railroads

Maricopa & Phoenix R R
 Phoenix Street Railway Co

R. R. Ticket Brokers

Goldberg, Aaron
 Price, George
 Seelig, T H

Real Estate Dealers

Arizona Land & Reclamation Co
 Bird, Allen T
 Collins, M E
 Evans, J W
 Fowler Bros
 Franklin & Thomas
 Hickey Bros
 Hancock, Wm A
 Holmes & Hewins
 Irvine, E
 Jackman, S H
 Johnstone, C W
 Logan & Allen
 Perkins & Walker
 Phoenix Land Investment Co
 Porter & Baxter
 Real Estate & Mining Exchange
 Symonds & Bird
 Wallace, D H
 Schultz & Franklin

Restaurants

Boss Restaurant
 Cabinet Restaurant
 Garden City Restaurant
 Grand Central Restaurant
 Chung Ty Restaurant
 Star Restaurant
 French Restaurant
 Capitol Restaurant

Second-hand Store

Dorris Bros

Sewing Machine Agencies

Dillard, P F
 Lewis, Q A

Shoemakers

Moreno, A
 Pfeiffer, Geo A
 Sanchez, A

Stables (*see Livery Stables*)

Stage Lines

Arizona Stage Co
 Tempe & McDowell Stage Line

Stationers (*see News Depots*)

Steamship Agencies

Meyer, A Leonard

Stenographers

Pinney, W L
 Rosenberg, G A

Stoves and Tinware (*see Hardware*)

Surveyors (*see Civil Engineers*)

Tailors

Eisenhardt, F
 Landgraf, Geo
 Martinez, Victoriano
 Merchant Tailor Agency,
 H S Bridge & Co

Teachers—Public and Private Schools

Baker, Miss M
 Bury, Mrs C H
 Davis, Mrs W A
 Dalton, Prof T A
 Dole, Miss Julia

DILLON & KENEALY, Leaders in Boots & Shoes.

✠ E. GANZ, ✠

Washington Street, near Hartford Bank, - Phoenix, Arizona,

WHOLESALE DEALER AND JOBBER IN

LIQUORS, TOBACCOS,

—AND—

SMOKERS' ARTICLES.

AGENT FOR

Anthoney & Kuhn's Brewery

ST. LOUIS, MO.

HUGHES & McGLASSON.

H. A. HUGHES, M. D. - - - - - Surgeon and Oculist.
T. D. McGLASSON, M. D. - Diseases of the Nasal Passages and Chest a Specialty.

Office at Gregory House, Phoenix, Arizona.

Mrs. E. A. INGALLS, M. D.

Obstetrics and Diseases of the Womb
A SPECIALTY.

PHOENIX, - - - ARIZONA.

PHOENIX NURSERIES,

R. E. FARRINGTON, Proprietor.

ALL KINDS OF

Fruit and Ornamental Trees,
ROSES, SHRUBS, ETC.

CATALOGUE MAILED FREE ON APPLICATION.

Fulton, Mrs A A
 Fry, Miss Lillian
 Kelly, Miss Ada
 Kelly, Miss Addie
 Lynch, Miss M
 McDermott, Miss Letitia
 Sweeney, Mrs J J
 Warren, Miss Edna V

Telegraph Companies

U S Military Tel
 Arizona Telegraph Co

Tobacconists (see Cigars and Tobacco)

Undertakers

Bacon, J A
 Gregory, J M
 Ryder, H W
 Wohler, H & Co

Veterinary Surgeons

Chandler, A J
 Keefer, Geo H

Watchmakers (see Jewelers)

SOUTHERN PACIFIC Co.

(PACIFIC SYSTEM.)

TICKET RATES BETWEEN MARICOPA AND STATIONS NAMED BELOW.

Children under twelve years of age, half Fare. Children under five years of age, free.

To obtain Rates from Phoenix, add \$3.00 to Rates from Maricopa.

Stations.	Unlimited 1st Class.	2d Class.	Stations.	Unlimited 1st Class.	2d Class
San Francisco	33 85	25 00	Avon	33 60	25 00
Oakland, 16th St	33 85	25 00	Cornwall	33 30	25 00
West Berkeley	33 85	25 00	Los Medanos	33 20	25 00
Stege	33 85	25 00	Antioch	33 15	25 00
San Pablo	33 85	25 00	Brentwood	32 90	25 00
Sobrante	33 85	25 00	Byron	32 75	25 00
Pinole	33 85	25 00	Bethany	32 45	25 00
Vallejo Junction	33 85	25 00	Tracy	32 25	25 00
Port Costa	33 85	25 00	Banta	32 15	25 00
Martinez	33 70	25 00	Lathrop	31 85	25 00

DILLON & KENEALY, One Price Square Dealers.

FRANK COX,
ATTORNEY-AT-LAW,

Special attention given to collections.

District Attorney for Maricopa County.

A. C. BAKER.

JOE CAMPBELL.

BAKER & CAMPBELL,

ATTORNEYS-AT-LAW,

Rooms 1 and 2, Thibodo Building,

Phoenix, Arizona.

PHOENIX
STEAM FLOUR MILLS
AND FAMILY GROCERY STORE,
Cor. Montezuma and Jefferson Sts., - Phoenix, Arizona.

JOHN Y. T. SMITH, Proprietor.

P. O. Box 73.



H. L. TULBURT,

DEALER IN AND MANUFACTURER OF

SADDLES, HARNESS,

—AND—

Horse Furnishing Goods of all Descriptions.

CARRIAGE TRIMMING AND REPAIRING

NEATLY DONE AND SATISFACTION GUARANTEED.

SHOP, WASHINGTON STREET, NEAR HARTFORD BANK,
PHOENIX, ARIZONA.

Have served apprenticeship in all lines of my business and have worked in over twenty States and Territories. I am thoroughly posted in all styles of Stock Saddles and Light and Heavy Harness. All my work is hand-made, and

THE BEST OF LEATHER USED.

Stations.	Unlimited 1st Class.	2d Class.	Stations.	Unlimited 1st Class.	2d Class.
Ripon	31 55	25 00	<i>Saugus</i>	19 80	
Salida	31 45	25 00	Fillmore	20 50	
Modesto	31 25	25 00	Santa Paula	20 80	
Ceres	31 15	25 00	Saticoy	21 05	
Turlock	30 85	25 00	Conejo	21 15	
Delhi	30 70	25 00	San Buenaventura ..	21 30	
Livingston	30 55	25 00	Carpinteria	21 85	
Atwater	30 35	25 00	Monticeto	22 05	
Merced	30 15	25 00	<i>Santa Barbara</i>	22 15	
Athlone	29 85	25 00	<i>Saugus</i>	19 80	
Minturn	29 65	25 00	Newhall	19 75	
<i>Berenda</i>	29 35	25 00	Fernando	19 45	
<i>Raymond</i>	31 35	27 00	Burbank	19 15	
<i>Berenda</i>	29 35	25 00	Sepulveda	19 10	
Madera	29 15	25 00	Tropico	19 00	
Borden	29 05	25 00	<i>Los Angeles</i>	18 85	
Sycamore	28 80	25 00	Ballona	19 15	
Fresno	28 50	25 00	The Palms	19 20	
Malaga	28 35	25 00	<i>Santa Monica</i>	19 35	
Fowler	28 20	25 00	<i>Los Angeles</i>	18 85	
Selma	28 05	25 00	Florence	19 00	
Kingsburg	27 90	25 00	Lynwood	19 15	
Traver	27 70	25 00	Compton	19 15	
<i>Goshen</i>	27 50	25 00	Cerritos	19 30	
Hanford	27 85	25 40	Wilmington	19 35	
Lemoore	28 10	25 65	<i>San Pedro</i>	19 45	
<i>Huron</i>	28 75	26 25	<i>Los Angeles</i>	18 85	
<i>Goshen</i>	27 50	25 00	Florence	19 00	
Tulare	27 15	25 00	Downey	19 20	
Tokay	27 00	25 00	Norwalk	19 35	
Tipton	26 85	25 00	Anaheim	19 65	
Pixley	26 65	25 00	Orange	19 80	
Alila	26 50	25 00	<i>Santa Ana</i>	19 85	
Delano	26 25	25 00	<i>Los Angeles</i>	18 85	
Sumner	25 25	25 00	Shorb	18 65	
Pampa	24 65		Alhambra	18 60	
Caliente	24 35		San Gabriel	18 55	
Keene	23 80		Savanna	18 50	
Girard	23 60		Monte	18 45	
Tehachapi	23 35		Puente	18 25	
Cameron	23 00		Spadra	17 95	
Mojave	22 55		Pomona	17 85	
Lancaster	21 55		Ontario	17 65	
Alpine	21 10		Cucamonga	17 55	
Southside	20 55		Colton	17 10	
Lang	20 25		Mound City	17 00	
Kent	20 15		Brookside	16 90	

DILLON & KENEALY, Sole Agents for Jas. Mean's \$3 Shoes.

CAPITOL CIGAR STORE.

T. H. SEELIG,

DEALER IN FINE

IMPORTED  DOMESTIC CIGARS

SMOKERS' ARTICLES, CUTLERY, ETC.

RAILROAD TICKET BROKER.

*Railroad Tickets Bought, Sold and Exchanged. Every Ticket Sold
by me is Guaranteed or the money returned.*

GOODRICH BLOCK, PHOENIX, A. T.

FOWLER BROS.

Real Estate, Commission & Brokerage

FINE FRUIT LANDS A SPECIALTY.

*We can furnish Alfalfa Lands and Pasturage
for Cattle.*

Correspondence with Stock Men Solicited.

PROPRIETORS OF WESTFIELD FRUIT FARM.

Office, next door to Hartford Bank, Phoenix, Arizona.

Stations.	Unlimited 1st Class.	2d Class.	Stations.	Unlimited 1st Class.	2d Class.
El Casco	16	65	<i>San Francisco</i>	33 85	25 00
San Gorgonio.....	16	40	Oakland, Market St.	33 85	25 00
Banning	16	20	East Oakland	33 85	25 00
Indio	14	05	Fruit Vale.....	33 85	25 00
Yuma	8	10	Melrose	33 85	25 00
Gila City.....	7	40	San Leandro	33 85	25 00
Adonde	6	60	Lorenzo	33 85	25 00
Tacna	6	10	Haywards	33 85	25 00
Mohawk Summit... 5	30		Decoto	33 75	25 00
Texas Hill.....	4	95	<i>Niles</i>	33 65	25 00
Aztec	4	30	Irvington.....	33 75	25 00
Stanwix	3	85	Warm Springs ...	33 85	25 00
Sentinel	3	60	Milpitas.....	33 85	25 00
Painted Rock	2	90	<i>San Jose</i>	33 85	25 00
Gila Bend.....	2	15	<i>Niles</i>	33 65	25 00
Bosque	1	65	Sunol	33 45	25 00
Estrella	1	20	Pleasanton.....	33 30	25 00
Montezuma		75	Livermore	33 10	25 00
Heaton		25	Altamont.....	32 80	25 00
Sweet Water.....		50	Midway	32 55	25 00
Casa Grande.....	1	05	<i>Tracy</i>	32 25	25 00
Toltec.....	1	55	<i>Lathrop</i>	31 85	25 00
Picacho	2	00	<i>Stockton</i>	32 20	25 00
Red Rock	2	70	Charleston	32 45	25 25
Sandair	3	20	<i>Milton</i>	33 40	26 20
Rillito	3	50	<i>Peters</i>	32 80	25 60
Jaynes	4	00	Farmington.....	33 00	25 80
Tucson.....	4	35	<i>Oakdale</i>	33 55	26 35
Wilmot	4	65	<i>Stockton</i>	32 20	25 00
Papago.....	5	05	Lodi.....	32 65	25 00
Pantano.....	5	75	<i>Galt</i>	32 90	25 00
Mescal	6	20	Carbondale	33 75	25 85
Benson.....	6	65	<i>Ione</i>	34 00	26 10
Ochoa	7	10	<i>Galt</i>	32 90	25 00
Dragoon Summit... 7	60		Elk Grove.....	33 30	25 00
Cachise	8	10	Florin	33 55	25 00
Willcox	8	65	Brighton	33 65	25 00
Bowie.....	9	80	<i>Sacramento</i>	33 85	25 00
San Simon.....	10	60	Antelope	34 30	25 45
Steins Pass.....	11	35	<i>Junction</i>	34 40	25 55
Lordsburg	12	30	Lincoln	34 75	25 90
Lisbon	12	85	Sheridan	34 95	26 10
Separ	13	30	Wheatland	35 05	26 20
<i>Deming</i>	15	30	Yuba	35 40	26 55
<i>El Paso</i>	19	65	Marysville.....	35 45	26 60
			Gridley ...	35 95	27 10
			Biggs.....	36 05	27 20

H. W. RYDER,

PHOENIX AND TEMPE,

DEALER IN

♣ L U M B E R ♣

—AND—

BUILDING MATERIAL,

Mouldings, Pickets,
Posts, Shingles,
Shakes, Lath,
Doors, Sash,
Blinds, Lime,
Hair, Plaster,
Cement.

PAINTS, OILS

—AND—

Builders' Hardware of every Description.

ALSO TERRA COTTA CHIMNEY PIPE.

HAY AND BARLEY.

*Am always pleased to show people my stock, even if they do
not buy. Give us a call.*

South Side of Plaza, opp. City Hall,

JEFFERSON STREET,

PHOENIX, - - ARIZONA.

BRANCH YARD,

W. S. Johnston, Manager,

MILL AVENUE,

TEMPE, - - ARIZONA.

Stations.	Unlimited 1st Class.	2d Class.	Stations.	Unlimited 1st Class.	2d Class.
Nelson	36 35	27 50	Reno	40 90	32 05
Durham	36 55	27 70	Wadsworth	42 60	33 75
Chico	36 75	27 90	Oreana	46 30	37 45
Nord	36 95	28 10	Humboldt	47 40	38 55
Vina	37 00	28 35	Winnemucca	49 40	40 55
<i>Tehama</i>	37 00	28 35	Golconda	50 20	41 35
Red Bluff	37 35	28 70	Battle Mountain	52 40	43 55
Cottonwood	37 85	29 20	Beowawe	54 05	45 20
Anderson	38 05	29 40	Palisade	54 95	46 10
Redding	38 40	29 75	Carlin	55 40	46 55
Middle Creek	38 55	29 90	Moleen	56 00	47 10
Kennet	39 10	30 45	Elko	56 55	47 10
Elmore	39 45	30 80	Halleck	57 75	47 10
Smithson	39 75	31 10	Wells	59 40	47 10
Delta	39 95	31 30	Independence	60 15	47 10
Gibson	40 25	31 60	Toano	61 20	47 10
Castle Creek	40 70	32 05	Montello	62 00	47 10
Lower Soda Springs	40 80	32 15	Tecoma	62 50	47 10
Dunsmuir	41 00	32 35	Terrace	64 15	47 10
Upper Soda Springs	41 00	32 35	Kelton	65 75	47 10
McCloud	41 45	32 80	Promontory	66 85	47 10
Sisson	41 55	32 90	Corinne	66 85	47 10
Edgewood	42 25	33 60	Brigham	66 85	47 10
Montague	43 10	34 45	Bonneville	66 85	47 10
Snowdon	43 35	34 70	<i>Ogden</i>	66 85	47 10
Hornbrook	43 80	35 15	<i>South Vallejo</i>	34 00	25 15
Coles	44 15	35 50	<i>Napa Junction</i>	34 25	25 40
<i>Junction</i>	34 40	25 55	Cordelia	34 45	25 60
Rocklin	34 55	25 70	<i>Napa Junction</i>	34 25	25 40
Penryn	34 70	25 85	Napa	34 50	25 65
Newcastle	34 80	25 95	Yountville	34 75	25 90
Auburn	34 95	26 10	Oakville	34 85	26 00
Clipper Gap	35 30	26 45	Rutherford	34 90	26 05
Lander	35 75	26 90	St. Helena	35 05	26 20
Colfax	35 90	27 05	<i>Calistoga</i>	35 30	26 45
Cape Horn Mills	36 10	27 25	<i>Port Costa</i>	33 85	25 00
Gold Run	36 40	27 55	<i>Benicia</i>	33 95	25 10
Dutch Flat	36 50	27 65			
Shady Run	36 85	28 00			
Blue Cañon	37 10	28 25			
Emigrant Gap	37 35	28 50			
Cisco	37 75	28 90			
Tamarack	37 95	29 10			
Cascade	38 15	29 30			
Summit	38 45	29 60			
Truckee	39 15	30 30			
Boca	39 55	30 70			

DILLON & KENEALY, Ladies' Fine French Shoes at \$3.50.

BLACK CANON ROAD, ONE-HALF MILE NORTH OF PHOENIX.

GARDEN CITY NURSERY,

Orange, Fig, Olive, Peach, Apricot, Ash, Umbrella,
Pepper and Catalpa Trees.

FAN PALMS.

Water Shares in Grand Canal for Rent.

Address, F. B. DEVEREUX, Phoenix, Arizona.



F. Balsz & Co.

WHOLESALE AND RETAIL

BUTCHERS,

Montezuma Street, west of Plaza,

PHOENIX, ARIZONA.

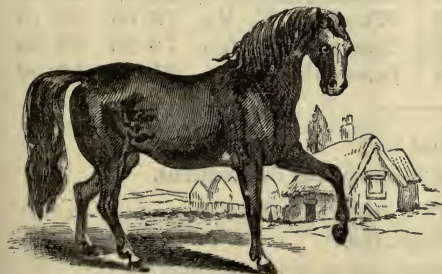
Buy the Choicest Beef, Mutton, Pork, Veal, Sausage, etc.
Everything in the line is First-class and Fresh.

ARCADE

BREWERY AND SALOON

N. E. COR. WASHINGTON AND MARICOPA STS.

PHOENIX, ARIZONA.



ADRIAN,

SIRED BY THE

GREAT ALMONT,

Will Make the Season at \$30.

Two or more Mares owned by one
person \$25 each.

Jan'yry 1st to August 1st.

Full Pedigree Furnished on application.

J. T. SIMMS, PHOENIX, ARIZONA.

SOUTHERN PACIFIC COMPANY.

THROUGH RATES OF FARE.

(SUBJECT TO CHANGE.)

To obtain rates from Phoenix, add \$3.00 to rates from Maricopa.

From Maricopa.	Unlimited. 1st Class.	Limited. 2d Class.	From Maricopa.	Unlimited. 1st Class.	Limited. 2d Class.
Baltimore, Md. . . .	\$81 45	\$59 00	Milwaukee, Wis. . .	\$65 00	\$48 50
Binghamton, N. Y. .	79 90	60 00	Montreal, Can. . . .	84 35	62 50
Birmingham, Ala. .	63 20	46 70	Nashville, Tenn. . .	61 75	46 70
Boston, Mass.	85 85	63 50	New Orleans, La. . .	57 10	42 50
Buffalo, N. Y.	75 20	56 95	New York, N. Y. . .	84 45	61 50
Burlington, Ia. . . .	61 85		Omaha, Neb.	59 70	39 75
Cairo, Ill.	57 20	42 50	Pacific Junction, Ia.	59 70	39 75
Chattanooga, Tenn. .	64 30	49 00	Philadelphia, Pa. . .	84 15	60 00
Chicago, Ill.	66 05		Pittsburg, Pa.	74 75	55 50
Cincinnati, Ohio. . .	69 80	50 50	Portland, Me.	89 35	66 50
Cleveland, Ohio. . .	72 30	54 45	Quebec, Can.	86 20	63 85
Columbus, Ohio. . .	71 30	52 65	Quincy, Ill.	59 70	
Council Bluffs, Ia. .	59 65	39 75	Richmond, Va. . . .	86 50	61 60
Dayton, Ohio.	70 30	50 50	Rochester, N. Y. . .	76 60	58 30
Denver, Col.	45 65	30 00	Rock Island, Ill. . .	62 95	
Detroit, Mich.	73 80	53 35	Salamanca, N. Y. . .	76 15	56 90
Erie, Pa.	73 50	55 85	Sandusky, Ohio. . .	73 30	53 00
Evansville, Ind. . . .	64 80	46 70	Springfield, Ill. . .	61 45	46 95
Fitchburg, Mass. . .	89 60	63 75	Springfield, Mass. .	84 15	62 50
Fort Wayne, Ind. . .	69 50	50 50	Springfield, Ohio. .	71 30	51 20
Fort Worth, Tex. . .	38 10	35 00	St. Louis, Mo. . . .	59 45	
Galveston, Tex. . . .	46 00	35 90	St. Joseph, Mo. . . .	55 75	37 05
Harrisburg, Pa. . . .	82 20	59 00	St. Paul, Minn. . . .	69 95	45 00
Houston, Tex.	45 15	35 00	Syracuse, N. Y. . . .	78 20	59 90
Indianapolis, Ind. . .	65 15		Toledo, Ohio.	71 30	52 20
Kansas City, Mo. . .	54 90	35 00	Washington, D. C. .	81 45	59 00
London, Can.	72 60	56 75	Wheeling, W. Va. . .	73 00	55 75
Louisville, Ky. . . .	66 00	49 25	Youngstown, Ohio. .	75 20	56 25
Memphis, Tenn. . . .	54 75	42 50	Zanesville, Ohio. . .	71 85	53 40

Above rates apply via direct routes only.

Ask agents for rates to other and intermediate destinations.

Children under twelve (12) years of age, half fare.

Children under five (5) years of age, free.

150 lbs. free baggage will be allowed per each whole ticket.

DILLON & KENEALY, Leaders in CLOTHING.

TRASK & KAYS,

Make a Specialty of First-class Family

GROCERIES, CROCKERY, LAMPS AND GLASSWARE.

*Highest market price paid for Country Produce
of all kinds.*

One Door above the Post-office, Phoenix.

Also Breeders and Dealers in GALLOWAY CATTLE. Ranch, four
miles Northwest of Phoenix.

CORRESPONDENCE SOLICITED.

PHOENIX NEWS DEPOT,

W. T. WOODS, Jr., - - - PROPRIETOR,
(Successor to E. G. Wheeler & Co.)

DEALER IN

Stationery, Blank Books, Periodicals,

Magazines, Notions, Picture Frames,

ARTISTS' MATERIALS,

TOBACCO, CIGARS, CIGARETTES, ETC.

Receives Subscriptions for all Eastern and Western Papers.

Also receives orders for

ROTHROCK'S VIEWS OF ARIZONA.

WELLS, FARGO & CO.

EXPRESS AND BANKING.

Capital, - - - - - \$6,250,000.

JNO. J. VALENTINE.....General Manager, San Francisco

E. M. COOPER....General Sup't, Western Department, San Francisco

L. F. ROWELL Sup't, Southwestern Division, San Francisco

A. LEONARD MEYER, Agent, Phoenix, Arizona.

(Over 1,900 Agencies throughout the United States and Mexico.)

The business of Wells, Fargo & Co's Express, is to forward, by rapid conveyance,

Merchandise, Packages,
Parcels, Jewelry,
Gold, Silver,
Bank Notes, Bonds,
Valuable Papers, Etc.,

and to deliver the same promptly; to make collections, with or without goods; to fill orders, attend to commissions and to carry and deliver letters.

The Company's lines extend throughout the Western States, from the

PACIFIC OCEAN TO CHICAGO, ST. LOUIS AND NEW ORLEANS,

where connections are made with responsible Express Companies for other points in the United States and Canada, throughout the Republic of Mexico, to Asiatic ports and to nearly all the principal Cities of Europe.

WHO IS H. SHUMAKER ?

*Replying to the Question you just asked,
we will quote from a local Newspaper.*

"He has without doubt the neatest Barber Shop in this country; it is supplied with six Monaco Chairs, made by E. Berminghaus, Cincinnati, Ohio. For beauty and comfort these chairs stand without an equal. Grand in construction, stately in appearance, ornamental in design, fine in finish, the leading chair of the nineteenth century. The mirror case standing in front of these chairs is thirty feet long; all the woodwork is black walnut, carved, veneered and engraved. The shelf is of pure Italian marble. The whole is fitted with French plate mirrors, 80 by 60 inches. A large plate glass mirror is placed over the wash stand and a magnificent dressing case ornaments one side of the room.

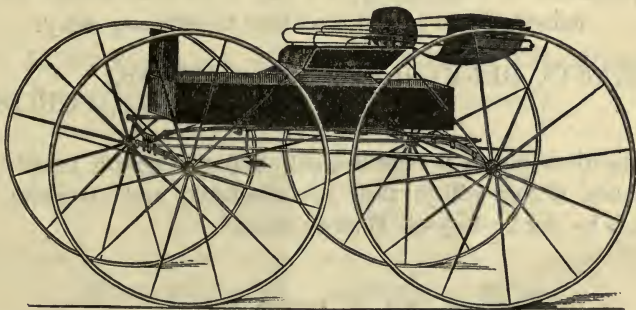
"The wash stand and bathrooms are supplied with hot and cold clear water. The barber shop and bathrooms are illuminated by gas, giving the whole place a brilliant appearance, and, as we said before, making without exception, the finest and most complete barber shop and bathrooms in this country. Six men who thoroughly understand their business are continually employed to attend to the wants of patrons. Mr. Shumaker is too well known among our people to need any further mention; he is an old-time barber and an old Arizonian. Phoenix ought to be proud that she possesses a man of his stability and enterprise."

ISAAC OROZCO.

ADOLFO VASQUEZ.

BLACKSMITHS AND FARRIERS.

Wagon-making and Repairing a Specialty.



All Kinds of Wagon and Iron Work Skillfully Executed.

OROZCO & VASQUEZ,

Cor. Cortez & Madison Sts., - PHOENIX, ARIZONA.

WELLS, FARGO & CO'S EXPRESS MONEY ORDERS

ARE THE

Cheapest, Safest and Most Convenient Method

—OF—

TRANSMITTING MONEY.

ABSOLUTE SAFETY FROM THEFT OR LOSS

is secured by this system, and the orders are safer for travelers and more convenient than money.

No written application is required when purchasing these Orders.

A RECEIPT IS GIVEN

to the purchaser of these Money Orders. If an order should be lost, the money will be refunded without unnecessary delay.

MERCHANTS, BENEVOLENT ASSOCIATIONS,
INSURANCE COMPANIES, PUBLISHERS,

and all to whom money is remitted, will find the system greatly to their convenience, if they will in their advertisements and otherwise, request that funds be sent by Express Money Orders.

—♦— R A T E S . —♦—

For \$ 5 and under....	5 Cents.	Over \$20 to \$30.	12 Cents.
Over 5 to 10.....	8 “	“ 30 to 40.	15 “
“ 10 to 20.....	10 “	“ 40 to 50.	20 “

Larger sums in proportion.

LEMON HOTEL LIVERY, FEED AND SALE STABLES,

J. L. GANT, Proprietor,

Jefferson Street, - - Back of Lemon Hotel,
PHOENIX, ARIZONA.

Teams sent to any part of the Territory with or without drivers. No extra charge for delivering rigs in town. DRUMMERS' PATRONAGE SOLICITED.

Tempe & McDowell STAGE LINE POMEROY BROS., - - Proprietors.

*Stages of the TEMPE & McDOWELL Stage Line leave
TEMPE daily, Sundays excepted, on arrival of
train from **MARICOPA**, for*

MESA CITY, JONESVILLE & Fort McDOWELL

and Extras from MESA CITY to FLORENCE, PINAL and
SILVER KING, when called for.

LOW RATES and QUICK TIME Guaranteed.

R. A. DAVIS, Agent at Tempe.

R. T. OSBORNE, M. D.

PHYSICIAN AND SURGEON,

DISEASES of the MIND and NERVOUS SYSTEM a Specialty.

PHOENIX, ARIZONA.

DE FOREST PORTER.

FRANK BAXTER, Notary Public.

PORTER & BAXTER,

ATTORNEYS AT LAW,

WASHINGTON STREET, - - - PHOENIX, MARICOPA COUNTY, ARIZONA.

Land and Mining Laws a Specialty.

PURCHASING —AND— COMMISSION DEPARTMENT.

TRADING, ETC., BY EXPRESS.

The object of this Department is to give the public the use of the vast facilities controlled by and within the reach of

Wells, Fargo & Co's Express,

for satisfying their most peculiar wants in the well-furnished markets of cities and towns.

A Trial will convince any Person of its Great Advantages

over the old-fashioned and inconsiderate practice of *imposing upon friends and acquaintances*, when traveling, all sorts of troublesome and unprofitable commissions, or *intrusting them to unknown and irresponsible parties*.

No Invasion of Local Mercantile Interests

is made or contemplated by it; for it is more particularly designed to meet those cases of frequent occurrence when a particular article is wanted—*something that cannot possibly be had in the home market*. The truth of this assertion will not be disputed if the expense of service and express charges, added to cost of purchase, are taken into account. In its legitimate province, the PURCHASING AND COMMISSION DEPARTMENT of this Company is *not hurtful to any business interest*, and those who have tried it—*business firms and private families*—understand well that it is

A GREAT PUBLIC CONVENIENCE,

and find many occasions to resort to it. Through their agents in every city, village or railway station of any importance, and the thousands of employees, scattered up and down the country within their own jurisdiction, and their correspondents and

Business Connections in Large Cities, at Home and Abroad,

and with other Express Companies, they certainly have the appliances at command for operating this peculiar branch of business in the most thorough and satisfactory manner.

VARIETY STOCK FARM,

6 Miles West of Phoenix, on the Yuma Road.

Forrest Clay, the celebrated Kentucky trotting horse, the only standard bred Stallion in the Territory, will make the season, beginning MARCH 1st and ending JUNE 1st, 1888, in PHOENIX the first four days of each week, and at VARIETY STOCK FARM the last three days of each week.

TERMS—\$50.00 to insure. Secured note taken, payable at end of the season.

A few standard bred stallion colts, from Forrest Clay, out of imported mares from Gen. W. T.

Withers' Fairlawn Stock Farm, Lexington, Ky., for sale.

All mares being bred to Forrest Clay will be given pasture free during season.

✦FORREST CLAY✦

Register, No. 1934.



BLUE GRASS BOY.

No. 65,285.

The thoroughbred Durham Bull, from the Abe Renick's Rose of Sharon tribe, is at the Variety Stock Farm. Service \$10.00 per cow, a calf guaranteed. Thoroughbred and graded bull calves for sale from this noted bull, which was purchased from W. W. Hamilton, of Lexington, Ky., and imported by Geo. T. Beckers.

THOROUGHbred

Registered Berkshire and Poland

CHINA



HOGS.

Having purchased the entire band of thoroughbred Berkshire and Poland China Hogs, imported by G. W. F. Johnson, for the Calistoga Stock Farm, I will sell pigs in lots of three (one boar and two sows) for \$25.00. The pedigree of all thoroughbred stock guaranteed. For further particulars inquire of or address,

GEO. T. BECKERS, Phoenix, A. T.

PURCHASING AND COMMISSION DEPARTMENT.

TELEGRAPHIC ORDERS.

Special telegraphic orders through the Company's agents will always receive prompt attention, the cost of telegram being prepaid by the party for whom it is sent.

BAGGAGE CHECKS

May be sent to this Department. Care should be taken to keep a memorandum of the numbers. They should be regularly way-billed, with charges *prepaid*.

PAWNBROKERS' TICKETS

Sent to redeem property, must be accompanied by the full amount due. Pawnbrokers as a rule, will not forward pledges C. O. D.

SPECIAL COMMISSIONS.

In connection with the Purchasing and Commission Department, proper attention will be given to the *Recording of Deeds*, and the *Service of Legal Papers* in any county where the Company have an agency, and to *business connected with the various Departments at State and Territorial Capitals*. The public should bear this fact in mind.

The Purchasing and Commission Department

is under the supervision of Mr. Aaron Stein, an experienced and conscientious gentleman, well and favorably known to the business community of San Francisco, and to the Express fraternity throughout the entire country, who will spare no pains to give prompt and entire satisfaction. All orders will be filled and returned as soon as possible.

♣ THE GREAT EASTERN ♣



ELLIS & BROWN,

(Successors to GUSS ELLIS & CO.)

Corner Washington and Montezuma Streets,
PHOENIX, A. T.

Leaders in Elegant & Stylish Goods.

DIRECT IMPORTERS IN

FANCY & STAPLE

✦ DRY GOODS

THE LARGEST LINE OF CLOTHING

From the **BEST** Manufacturers in the **UNITED STATES.**

Ladies' and Gents' Furnishing Goods,

Ladies' WRAPS and GARMENTS of all kinds.

The Mammoth Boot & Shoe House,

And every article appertaining to a first-class store.

GOODS DELIVERED in any part of the City FREE of CHARGE.

Orders from the Country solicited and satisfaction guaranteed.

GOODS SOLD AT THE LOWEST PRICES.

*Express rates, per 100 lbs., from Phoenix
to ALL offices in*

ARIZONA.

Ash Fork	\$11 25
Bellemont	11 50
Benson	4 25
Bowie	5 50
Calabasas	5 25
Cañon Diablo	12 25
Casa Grande	1 75
Clifton	8 75
Contention	4 75
Crittenden	5 00
Dragon	4 50
Duncan	7 75
Fairbank	4 75
Flagstaff	11 75
Florence	5 25
Gila Bend	2 25
Globe	12 75
Hackberry	10 75
Holbrook	12 25
Huachuca	4 75
Kingman	10 50
Maricopa	1 00
Navajo Springs	12 25
Nogales	5 25
Pantano	3 75
Peach Springs	10 75
Pinal	8 50
Prescott	17 75
Prescott Junction	11 25
San Simon	6 00
Sentinel	3 00
Tempe	0 50
Texas Hill	3 50
Tombstone	6 25
Tucson	3 25
Willcox	5 00
Williams	11 50
Winslow	12 25
Yucca	10 25
Yuma	4 75

*Express rates, per 100 lbs., from Phoenix
to following offices in*

CALIFORNIA.

Alameda	\$8 00
Alma	8 00
Alturas	21 00
Alvarado	8 00

Alviso	\$ 8 00
Amador	10 50
Anaheim	7 50
Antioch	7 50
Arcata	10 25
Arroyo Grande	13 25
Auburn	8 50
Bakersfield	7 50
Banning	7 00
Barstow	8 50
Benicia	8 10
Berenda	7 50
Berkeley	7 50
Bishop Creek	15 00
Bloomfield	9 00
Blue Cañon	9 50
Bodega	9 10
Bodie	17 00
Borden	7 50
Butte City	10 25
Caliente	7 50
Calistoga	8 50
Cambria	14 75
Camp Taylor	8 25
Castroville	8 25
Carlsbad	8 25
Cloverdale	8 50
Colfax	9 00
Colton	7 00
Colusa	9 10
Concord	8 50
Copperopolis	9 75
Cordelia	8 25
Crescent City	10 50
Cucamonga	7 00
Daggett	8 50
Davisville	8 10
Delano	7 50
Delta	10 00
Diamond Springs	9 50
Dixon	8 25
Downey	7 50
Downieville	15 50
Duncan Mills	8 90
Dutch Flat	9 25
East Oakland	7 50
Elmira	8 25
Elsinore	8 00
Emigrant Gap	9 50
Encinitas	8 25
Eureka	9 75
Farmington	8 00
Felton	8 50

DILLON & KENEALY, Leaders in Hats.

Phoenix Daily Herald

PHOENIX, ARIZONA.

THE OLDEST,

THE LARGEST,

THE BEST,

THE ONLY

Paper in Central Arizona that

Takes the Associated Press Dispatches.

—HAS A—

Larger Circulation than any other Paper in Arizona.

It is read by more people than any other publication distributed in Arizona,
and is therefore the

BEST ADVERTISING MEDIUM.

Weekly, - \$3.00 per year. | Daily, - \$10.00 per year.

Inquire for Advertising Rates to

N. A. MORFORD, Editor and Proprietor.

ESTABLISHED IN 1880.

DAILY AND WEEKLY.

ARIZONA GAZETTE,

PHOENIX, ARIZONA.

THE OFFICIAL PAPER OF THE CITY.

Arizona Gazette Co., Publishers. | C. W. Johnstone, Manager.

Phoenix, being situated in one of the finest agricultural and grazing valleys in the Territory, is the only distributing point for supplies of all the mining country in Central and Northern Arizona; and as THE GAZETTE is taken in almost every family, mining camp and hamlet in this region, makes it one of the best advertising mediums in the Territory.

Daily, One Year, \$10.00.

Weekly, One Year, \$2.50.

Advertising Rates given on Application.

Ferndale	\$11 75	Los Alamos	\$13 75
Firebaughs	11 00	Los Angeles	7 00
Folsom	8 00	Los Banos	12 25
Fort Jones	14 00	Los Gatos	8 00
Fowler	7 50	Lower Lake	12 00
Freestone	8 75	Madera	7 50
French Gulch	11 50	Madison	8 75
Fresno	7 50	Mariposa	12 50
Fulton	8 25	Martinez	7 50
Galt	7 50	Marysville	8 25
Gilroy	8 00	Mayfield	8 00
Glen Ellen	8 40	Mendocino	15 00
Glenwood	8 25	Menlo Park	8 00
Gold Run	9 25	Merced	7 50
Goshen	7 50	Michigan Bar	9 50
Grass Valley	9 50	Millbrae	8 00
Grayson	9 25	Millville	11 00
Gridley	8 50	Milpitas	7 50
Gualala	12 50	Milton	8 00
Guerneville	8 50	Modesto	7 50
Hanford	7 50	Mojave	7 50
Haywards	7 50	Monterey	8 50
Healdsburg	8 50	Mountain View	8 00
Highland Springs	10 90	Napa	8 10
Hildreth	9 75	National City	8 25
Hill's Ferry	9 25	Needles	9 75
Hollister	8 25	Nevada	9 50
Howards	8 90	Newark	8 00
Hueneme	10 00	Newcastle	8 50
Huron	7 50	Newhall	7 50
Independence	16 00	Niles	7 50
Ione	8 00	Nord	9 00
Iowa Hill	10 75	Norwalk	7 50
Irvington	7 50	Oakdale	8 00
Jackson	10 50	Oakland	7 50
Jamestown	12 25	Oceanside	8 25
Keeler	16 00	Olema	8 50
Kelseyville	11 25	Ontario	7 00
Kernville	12 50	Orange	7 50
Kingsburg	7 50	Oroville	8 75
Knight's Landing	8 40	Pasadena	7 50
Knoxville	11 50	Paso Robles	9 25
Lakeport	11 25	Pescadero	11 25
Lamanda	7 50	Petaluma	8 00
Lancaster	7 50	Placerville	9 50
La Porte	14 50	Pleasanton	7 50
Lathrop	7 50	Plymouth	10 50
Lemoore	7 50	Point Arenas	13 50
Lincoln	8 25	Pomona	7 00
Livermore	7 50	Port Costa	7 50
Lodi	7 50	Portersville	9 50
Lompoc	15 75	Quincy	14 75
Lone Pine	16 00	Raymond	8 00

DILLON & KENEALY, Leaders in DRY GOODS.

A. BARRY,
City Engineer and County Surveyor,
PHOENIX, - - - ARIZONA.

H. N. ALEXANDER,
ATTORNEY-AT-LAW,
Irvine Building, Washington Street, - - PHOENIX, ARIZONA.

Collins' Addition

— TO THE —

CITY OF PHOENIX

One-half mile east of Depot, with street railway in operation through Washington Street. Rapidly improving and advancing in value. A splendid chance for investments.

J. W. EVANS, Agent.

C. J. DYER,
 **MAPS** 
PHOENIX, - - ARIZONA.

THE
Phoenix Weekly Advance.

ISAAC R. BIRT, Editor and Proprietor.

OFFICIAL PAPER OF MARICOPA COUNTY.

The Biggest Little Paper on the PACIFIC COAST.

TERMS: - - \$3.00 Per Year.

Red Bluff.....	\$9 40	Susanville.....	\$14 50
Redding.....	9 50	Sutter Creek.....	10 50
Redwood City.....	8 00	Sweetland.....	11 50
Rio Vista.....	8 25	Tahoe.....	11 50
Riverside.....	7 25	Tehachapi.....	7 50
Rocklin.....	8 25	Tehama.....	9 25
Rohnerville.....	11 75	Temecula.....	7 75
Sacramento.....	7 50	Templeton.....	9 25
St. Helena.....	8 50	Tipton.....	7 50
Salinas.....	8 50	Tomales.....	8 50
San Andreas.....	10 00	Tres Pinos.....	8 50
San Anselmo.....	8 10	Truckee.....	10 25
San Ardo.....	9 00	Tulare.....	7 50
San Bernardino.....	7 25	Ukiah.....	12 00
San Buenaventura.....	9 00	Upper Lake.....	11 75
San Diego.....	8 25	Vacaville.....	8 75
San Fernando.....	7 50	Vallejo.....	8 00
San Francisco.....	7 50	Vina.....	9 10
San Gabriel.....	7 00	Visalia.....	8 00
San Geronimo.....	11 00	Watsonville.....	8 25
San Jose.....	7 50	Weaverville.....	13 50
San Juan.....	9 25	West Berkeley.....	7 50
San Leandro.....	7 50	West Oakland.....	7 50
San Luis Obispo.....	12 75	Westport.....	16 50
San Mateo.....	8 00	Wheatland.....	8 25
San Miguel.....	9 00	Williams.....	8 75
San Pablo.....	7 50	Willows.....	8 75
San Pedro.....	7 50	Wilmington.....	7 50
San Quentin.....	8 00	Windsor.....	8 25
San Rafael.....	8 00	Winters.....	8 75
Santa Ana.....	7 50	Woodland.....	8 25
Santa Barbara.....	9 50	Yolo.....	8 50
Santa Clara.....	8 00	Yosemite.....	16 00
Santa Cruz.....	8 25	Yountville.....	8 25
Santa Maria.....	13 50	Yreka.....	12 50
Santa Monica.....	7 50		
Santa Paula.....	8 50		
Santa Rosa.....	8 25		
Saucelito.....	8 00		
Selma.....	7 50		
Shasta.....	10 25		
Sierra City.....	17 00		
Smartsville.....	10 00		
Soledad.....	8 75		
Sonoma.....	8 25		
Sonora.....	12 25		
Soquel.....	8 25		
Spadia.....	7 00		
Spanishtown.....	10 00		
Stockton.....	7 50		
Strawberry Valley.....	12 75		
Suisun.....	8 10		
Sumner.....	7 50		

*Express rates, per 100 lbs., from Phoenix
to following offices in*

COLORADO.

Denver.....	\$13 50
Fort Morgan.....	14 80
Las Animas.....	13 00
La Junta.....	13 00
Longmont.....	14 25
Pueblo.....	12 50
Trinidad.....	12 50

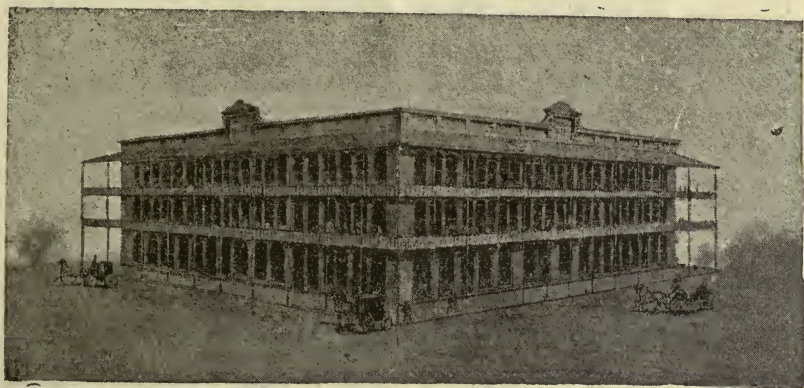
*Express rates, per 100 lbs., from Phoenix
to following offices in*

DAKOTA.

Bismarck.....	\$23 50
Colfax.....	19 90

Commercial HOTEL,

HERRICK & LUHRS, Proprietors.



THE
Leading Business and Family Hotel
IN ARIZONA.

Containing 100 Rooms. Business Center of City.

Cor. Jefferson and Center Sts.,
Phoenix, = = = = = Arizona.

Deadwood	\$24 00
Elk Point	16 30
Fargo	19 65
Jamestown	23 50
Montpelier	23 50
Northwood	20 50
Ordway	18 40
Rapid City	20 50
Salem	20 65
Sterling	23 50
Vermillion	16 40
Watertown	18 40
Yankton	16 50

*Express rates, per 100 lbs., from Phoenix
to following offices in*

IDAHO.

Albion	\$17 25
Bellevue	17 25
Blackfoot	15 50
Boise City	18 25
Caldwell	16 75
Challis	23 50
Eagle Rock	15 75
Franklin	14 25
Hailey	17 50
Ketchum	17 75
Lewiston	20 00
Moscow	17 25
Pocatillo	15 25
Soda Springs	15 50
Weiser	16 00

*Express rates, per 100 lbs., from Phoenix
to following offices in*

KANSAS.

Arkansas City	\$13 50
Atchison	13 50
Burlingame	13 50
Caldwell	13 50
Carbondale	13 50
Chanute	14 50
Cherryvale	14 50
Coffeyville	14 75
Concordia	14 75
Dodge City	13 25
El Dorado	13 50
Emporia	13 50
Eureka	13 50
Fredona	14 75
Garden City	13 25

Great Bend	\$13 25
Halstead	13 50
Independence	14 50
Iola	14 50
Lawrence	13 50
Leavenworth	13 50
Manhattan	13 50
McPherson	13 50
Newton	13 50
Olathe	13 50
Osage City	13 50
Ottawa	13 90
Princeton	14 25
Richmond	14 25
Sedgwick	13 50
Strong City	13 50
Topeka	13 50
Valley Center	13 50
Waverly	14 25
Wichita	13 50
Winfield	13 50
Wyandotte	13 50

*Express rates, per 100 lbs., from Phoenix
to following points in*

MONTANA.

Anaconda	\$18 50
Billings	20 25
Bozeman	19 75
Butte	18 50
Custer	20 50
Deer Lodge	18 50
Dillon	18 25
Fort Keogh	21 00
Garrison	18 75
Helena	19 75
Jefferson	19 00
Marysville	20 25
Miles City	21 00
Missoula	18 50
Trout Creek	17 50
Virginia City	21 00

*Express rates, per 100 lbs., from Phoenix
to following offices in*

NEBRASKA.

Ashland	\$15 00
Auburn	14 50
Beatrice	14 75
Bellevue	15 00
Brownville	14 75

Brown House,

THOS. BROWN, Prop'r.

Phoenix, = = = Arizona.

**ELEGANTLY FURNISHED ROOMS,
Transient and Permanent.**

This new house, situated on the corner of JEFFERSON and PIMA STREETS, is within one block of the City Hall and convenient to the Railroad Depot and business portion of the town. The rooms are commodious, light and airy and furnished throughout in an elegant and tasty manner, with all modern conveniences.

First-Class Patronage Solicited.

JAS. K. BURNETT,
Expressman,



WILL DELIVER

TRUNKS, VALISES and Other BAGGAGE

*To all parts of town with care and promptness. Will also call
for same to be delivered at all outgoing trains.*

Passengers Coming into Phoenix

would save time by handing their checks to the Baggage Master on the train, with instructions to deliver their baggage to me; or, they will find me in charge of W., F. & Co's wagon at the Depot.

Orders left at W., F. & Co's Office, in Phoenix, will receive Prompt Attention.

JAS. K. BURNETT.

Central City.....	\$15 25
Columbus.....	15 25
Crete.....	15 00
Dakota.....	15 25
David City.....	16 25
Delvitt.....	14 75
Dorchester.....	15 00
Dunbar.....	14 75
Endicott.....	14 75
Exeter.....	15 00
Fairmont.....	15 00
Falls City.....	14 25
Fremont.....	15 25
Grand Island.....	15 25
Harvard.....	15 25
Hastings.....	15 00
Inland.....	15 25
Juniata.....	15 25
Kearney.....	15 50
Lincoln.....	14 75
McCook.....	15 75
Nebraska City.....	15 00
Norfolk.....	15 75
Omaha.....	15 00
Plattsmouth.....	15 00
Red Cloud.....	15 25
Republican.....	15 50
Seward.....	15 00
South Bend.....	15 00
Syracuse.....	15 00
Tecumseh.....	14 50
Unadilla.....	15 00
Verdon.....	14 25
Waverley.....	15 00
West Point.....	16 00
York.....	15 00

*Express rates, per 100 lbs., from Phoenix
to following offices in*

NEW MEXICO.

Albuquerque.....	\$10 25
Bernalillo.....	10 25
Coolidge.....	11 75
Deming.....	7 50
Engle.....	8 50
Gallup.....	11 75
Georgetown.....	11 00
Lake Valley.....	8 25
Lamy.....	10 75
Las Cruces.....	8 50
Las Vegas.....	11 50
Lordsburg.....	6 75

Los Lunas.....	\$9 75
Manuelito.....	12 00
Nutt.....	8 00
Rincon.....	8 25
San Antonio.....	9 25
San Marcial.....	9 00
San Miguel.....	11 25
Santa Fe.....	11 00
Separ.....	7 00
Silver City.....	8 50
Socorro.....	9 25
Stein's Pass.....	6 25
Wallace.....	10 50
Wingate.....	11 75

*Express rates, per 100 lbs., from Phoenix
to following offices in*

OREGON.

Albany.....	\$11 75
Ashland.....	10 50
Astoria.....	11 75
Baker City.....	14 75
Canyonville.....	12 50
Corvallis.....	11 50
Dallas.....	12 00
Dalles (The).....	12 25
East Portland.....	11 25
Empire City.....	9 00
Eugene.....	12 00
Hillsboro.....	11 50
Jacksonville.....	11 75
La Grande.....	14 50
Marshfield.....	9 00
Oakland.....	12 00
Oregon City.....	11 50
Pendleton.....	13 75
Phoenix.....	10 75
Portland.....	11 00
Roseburg.....	11 75
Salem.....	11 50
Umatilla.....	13 25
Union.....	14 50
Weston.....	14 25
Yaquina.....	11 75

*Express rates, per 100 lbs., from Phoenix
to following offices in*

TEXAS.

Albany.....	\$11 75
Austin.....	12 00
Brenham.....	12 75

DILLON & KENEALY, Sole Agents for Jas. Mean's \$3 Shoes.

Stoves and Ranges,

TIN, COPPER, AGATE

—AND—

SHEET IRON WARE

PUMPS,

IRON PIPE

—AND—

FITTINGS.



GOON, BURTIS & GOON,
PLUMBERS and GAS FITTERS.

MANTELS,
TILE

—AND—

Marble Hearths.

Bath Room Furnishings

AGENTS FOR

BRAUN'S ELECTRIC LAMP

Sherwood's Novelty Steel Harness.

PHOENIX, - ARIZONA.

Bryan.....	\$13 00
Calvert.....	12 75
Cisco.....	10 50
Corsicana.....	11 75
Dallas.....	11 25
Denison.....	11 50
Eagle Pass.....	10 75
El Paso.....	7 50
Fort Worth.....	11 00
Galveston.....	12 50
Hearne.....	12 25
Hempstead.....	13 00
Houston.....	12 50
Kaufman.....	11 75
La Grange.....	12 00
Luling.....	11 50
Marfa.....	9 00
Morgan.....	12 00
Murphysville.....	9 25
Plano.....	12 25
Richmond.....	12 50
Rosenberg.....	12 50
San Antonio.....	11 25
Sherman.....	11 50
Spofford Junction.....	10 50
Victoria.....	13 00
Waco.....	11 75
Wacahache.....	12 50
Ysleta.....	8 00

*Express rates, per 100 lbs., from Phoenix
to following offices in*

UTAH.

Corinne.....	\$13 00
Frisco.....	17 25
Kellton.....	13 00
Logan.....	14 00
Milford.....	17 00
Nephi.....	15 00
Ogden.....	13 00
Park City.....	14 50
Provo.....	14 00
Salt Lake City.....	13 75
St. George.....	27 00
Silver Reef.....	27 00
Tintic.....	15 50
Wahsatch.....	13 75

*Express rates, per 100 lbs., from Phoenix
to following offices in*

WASHINGTON TERR.

Colfax.....	\$16 75
Dayton.....	14 50

Goldendale.....	\$15 00
Kalama.....	11 50
Palouse Junction.....	15 50
Port Gamble.....	13 00
Port Ludlow.....	13 00
Port Townsend.....	13 00
Seattle.....	12 50
Spokane Falls.....	16 50
Tacoma.....	12 00
Vancouver.....	11 50
Walla Walla.....	14 25
Wallula Junction.....	14 25
Yakima.....	16 00

*Express rates, per 100 lbs., from Phoenix
to following offices in*

WYOMING.

Aspen.....	\$14 00
Bryan.....	14 75
Carbon.....	16 50
Cheyenne.....	15 00
Evanston.....	13 75
Granger.....	14 50
Green River.....	15 00
Laramie.....	15 75
Rawlings.....	16 25
Rock Creek.....	16 25

*Express rates, per 100 lbs., from Phoenix
to following offices in*

MEXICO.

Aguascalientes.....	\$17 50
Celaya.....	17 50
Chihuahua.....	11 00
El Salto.....	17 50
Ensenada.....	9 25
Fresnillo.....	17 25
Guanajuato.....	17 50
Guaymas.....	7 00
Guadalajara.....	27 50
Hermosillo.....	6 50
Jimenez.....	12 50
Jimulco.....	14 75
Lagos.....	17 50
Lerdo.....	14 00
Magdalena.....	5 75
Mapimi.....	14 00
Matamoras.....	14 25
Mazatlan.....	9 00
Mexico (City of).....	17 50
Orizaba.....	20 75

DILLON & KENEALY, Emporium for FINE SHOES.

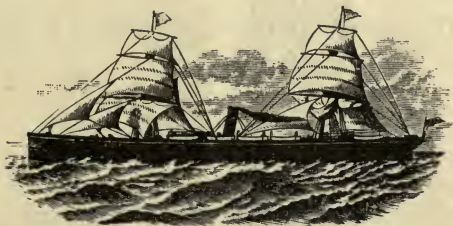
COX & HARMSSEN,
Contractors and Builders,
PHCENIX, ARIZONA.

Will furnish Estimates for all kinds of Building Work, including
Stone, Brick and Frame Buildings, Culverts and Bridge Work.

Have Extensive Brick Kilns near Town.

Will Plaster, Cement and do any class of work performed by any Building
Contractors.

HAMBURG-AMERICAN PACKET CO.
DIRECT LINE TO
England, France and Germany.



Steamers Leave New York Thursdays and Saturdays.

UNSURPASSED ACCOMMODATIONS FOR

Cabin and Steerage Passengers
AT LOW RATES.

Prepaid Tickets from European Points to Phoenix, Arizona, for sale at their
Agency here.

A. LEONARD MEYER, Agent.

At Office of Wells, Fargo & Co.

Paso del Norte.....	\$ 8 00
Puebla.....	19 75
Queretaro.....	17 50
San Luis Potosi.....	27 50
San Juan del Rio.....	17 50
Santa Rosalia.....	12 00
Silas.....	17 50
Vera Cruz.....	22 00
Zacatecas.....	17 50

Express rates, per 100 lbs., from Phoenix to the following

Cities East of the Missouri River.

Baltimore, Md.....	\$17 00
Binghampton, N. Y.	18 00
Birmingham, Ala.....	15 00
Boston, Mass.....	17 50
Buffalo, N. Y.....	17 25
Burlington, Ia.....	15 00
Cairo, Ills.....	15 50
Chattanooga, Tenn.....	17 50
Chicago, Ills.....	15 50
Cincinnati, Ohio.....	16 00
Cleveland, Ohio.....	17 00
Columbus, Ohio.....	16 50
Council Bluffs, Ia.....	14 50
Dayton, Ohio.....	16 25
Detroit, Mich.....	16 50
Erie, Pa.....	17 50
Evansville, Ind.....	15 75
Fitchburg, Mass.....	17 50
Fort Wayne, Ind.....	16 25
Harrisburg, Pa.....	17 75
Indianapolis, Ind.....	15 75
Kansas City, Mo.....	13 00
London, Can... ..	17 25
Louisville, Ky.....	16 00
Memphis, Tenn.....	14 75
Milwaukee, Wis.....	16 00
Montreal, Can.....	18 50
Nashville, Tenn.....	16 50
New Orleans, La.....	13 00
New York, N. Y.....	17 50
Philadelphia, Pa.....	17 25
Pittsburg, Pa.....	16 75
Portland, Me.....	17 75
Quebec, Can.....	19 20
Quincy, Ill.....	14 50
Richmond, Va.....	18 25
Rochester, N. Y.....	17 50
Rock Island, Ill.....	15 00
Salamanca, N. Y.....	17 75

Sandusky, Ohio.....	\$17 25
Springfield, Ill.....	15 25
Springfield, Mass.....	17 50
Springfield, Ohio.....	16 25
St. Louis, Mo.....	14 50
St. Joseph, Mo.....	13 00
St. Paul, Minn.....	16 50
Syracuse, N. Y.....	17 50
Toledo, Ohio.....	16 50
Washington, D. C.....	17 00
Wheeling, W. Va.....	16 75
Youngstown, Ohio.....	17 25
Zanesville, Ohio.....	16 75

Express rates, per 100 lbs., from Phoenix to following

FOREIGN COUNTRIES.

Austria.....	\$24 50
Belgium.....	26 00
Denmark.....	26 00
England.....	24 50
Finland.....	30 50
France.....	27 50
Germany.....	24 50
Holland.....	26 00
Ireland.....	24 50
Italy.....	27 50
Norway.....	26 00
Poland.....	30 50
Portugal.....	27 50
Russia.....	30 50
Sweden.....	26 00
Switzerland.....	26 50
Turkey.....	29 50

DILLON & KENEALY, Ladies' Fine French Shoes at \$3.50

LEMON • HOTEL,



E. M. MILLS, Proprietor,

PHOENIX, - - - ARIZONA.



Leading Hotel of Arizona.



CENTRALLY LOCATED,

*Sunny and well Ventilated, Noted for its Excellent Table,
Street Cars pass the House every few minutes,
Free 'Bus from the Depot.*

The Patronage of Tourists, Business Men and
Families Solicited.

ARMY HEADQUARTERS.

E. M. MILLS, - - - Manager.

TELEGRAPHIC TARIFFS

FROM

PHENIX

TO

LOCAL RATES.				10 Words.	Each Additional Word.
Tempe—Ft. McDowell—Whipple Bks. and Verde...				15c.	and 1c.
Maricopa				25	2
Prescott, via Whipple Bks.....				40	3
Gila Bend, Casa Grande, Sentinel and Texas Hill....				50	4
Tucson and Pantano.....				65	5
STATE RATES.					
Arizona, New Mexico and Southern California.....				75	5
Colorado, Utah, Nevada, West Texas and North Cala.				85	6
British Columbia, Idaho, Kansas, Montana, Wyoming, Nebraska, Oregon, East Texas, Washington Territory				1 00	7
All other points on WESTERN UNION lines				1 25	9
	10 Words.	Each Additional Word.			
Where the Day rate is	65c	and 5c	Night is..	55	and 4
“ “ “	75	5	“	65	5
“ “ “	85	6	“	75	5
“ “ “	1 00	7	“	90	6
“ “ “	1 25	9	“	1 25	9

IT STILL LEADS!

DAILY ARIZONAN WEEKLY

*A strictly Local Newspaper, devoted to the
Interests of Central Arizona.*

THE LARGEST CIRCULATION,

THE BEST ADVERTISING MEDIUM.

RATES OF SUBSCRIPTION.

DAILY—Six Months,	- - -	\$3 00	WEEKLY—Six Months,	- - -	\$1 50
“ One Year,	- - -	6 00	“ One Year,	- - -	2 50

Fine Job Printing a Specialty.

Address, CHAS. L. MORHER, - - - - Manager,
PHOENIX, ARIZONA.

E. IRVINE,

REAL ESTATE AGENT

—AND—

MONEY BROKER.

City and Country Property Bought and Sold.

Correspondence Solicited.

Office, Irvine Block, - Phoenix, Arizona.

HIGHLAND CANAL CO.



This new enterprise, now under construction, will open up to settlement 25 sections, or 16,000 acres, of the finest Fruit, Grape and Alfalfa Land to be found in the Salt River Valley. The soil is similar in character to that around Mesa City, a few miles west, which Hon. J. DeBarth Shorb pronounces "the only natural sherry district on this continent."

The Canal now being built will be 22 miles in length, 16 feet wide, and $2\frac{1}{2}$ feet deep, with a carrying capacity of 6,000 inches of water.



JAMES A. BAYARD,
President.

J. F. MEADOR,
Sec'y and Treasurer.

AUSTIN CARRINGTON,
Gen'l Manager.

PHOENIX,

ARIZONA.



KELLY & MARLOW,

WHOLESALE AND RETAIL

BUTCHERS

IRVINE BLOCK, WASHINGTON ST.

PHOENIX, ARIZONA.

1850.

J. E. WHARTON, M. D.

1888.

Physician, Surgeon and Accoucheur,
THIRTY-EIGHT YEARS' PRACTICE.

Thirteen Years at N. E. Corner Maricopa and Adams Streets,
PHOENIX, ARIZONA.

J. M. CREIGHTON,

ARCHITECT,

Office, Porter Block, Phoenix, Arizona.

F. P. TROTT,

Civil Engineer & Surveyor,

PHOENIX, ARIZONA.

J. W. BLANKENSHIP,

Real Estate and General Auctioneer

Careful attention given to sales of every description.

Constable of Phoenix.

Office, Corner Center and Adams Sts.

PHOENIX, ARIZONA.

MISS KATIE A. BAGLEY,

DRESSMAKER

TEMPE, ARIZONA.

DEALS ALSO IN

CANDIES, NUTS, FRUITS, STATIONERY AND TOBACCO.

GRAND CENTRAL LIVERY, FEED AND SALE STABLE,

J. L. WARD & SON, Proprietors.

Cor. Center and
Madison Sts.



PHOENIX,
ARIZONA.

Special Attention given Fine Stock.

Horses Bought and Sold.

ELEGANT CARRIAGES AND TEAMS
WITH CAREFUL DRIVERS,
FOR LADIES.

NEW BLACKSMITH SHOP

W. J. CARRIER & CO.

Cor. Center and Adams Sts., - - Phoenix, Arizona.

*The Most Competent
Workmen in the
Territory.*



*Horse-shoeing, Machine
Work and Repairing re-
ceives our special attention.*

CARRIAGE AND WAGON MAKING

Carefully and Promptly attended to by

MR. A. McDONALD.

CALL AT OUR PLACE OF BUSINESS.

Davis House

TEMPE, ARIZONA.

Everything New and in the Latest Style.



o o o o o o o o o o o o o o

Rooms Large and Airy.

Elegant Dining Room.

o o o o o o o o o o o o o o



We Employ only White Help.

Table Supplied with all the Delicacies of the Season.

R. A. DAVIS, Proprietor.

THE FAIR

Upper Tempe, A. T.

HARRY BERNARD, Proprietor.

New Store! New Goods! Low Prices!

The Cleanest and Freshest Goods to be had in the markets of the United States are daily arriving. Owing to the Railroad blockade a portion of my Stock was detained Two Months, therefore on account of the lateness of the season I will Sell Every Article REGARDLESS OF COST.

FOR BIG BARGAINS CALL AT

THE ✕ FAIR!

HARRY BERNARD, - - - UPPER TEMPE.

LON FORSEE,

— DEALER IN —

Staple AND Fancy Groceries

FRUITS AND PROVISIONS.

MINING AND RANCH SUPPLIES
A SPECIALTY.

ALSO AGENT FOR

Wells, Fargo & Co's Express.

Cor. MYRTLE and FIFTH STS.,

TEMPE, - - - ARIZONA.

— PHOENIX —

ILLUMINATING GAS AND ELECTRIC LIGHT CO.

H. OHNICK, SUPT.

Office, Cor. Washington and Cocopa Sts. - Phoenix, Arizona.

ARIZONA STAGE CO.



Carrying U. S. Mail & Wells, Fargo & Co's Express.

Leave PHOENIX as follows:

For Prescott and Northern Arizona 8.30 A. M. daily, connecting for Tip Top at Hudson's; for Stoddard's at Big Bug; for Fort Verde, at Aqua Fria.

For Vulture, Wickenburg, Stanton's and Prescott: TUESDAYS, THURSDAYS AND SATURDAYS, connecting for Walnut Grove at Antelope.

For further particulars, apply at

General Stage Office, Fry Building, - Phoenix, Arizona.

J. E. BEGGS, Supt.

A. LEONARD MEYER, Agt.

PHOENIX

BOTTLING WORKS,

JOSSELYN & SMYLY, Proprietors.

Manufacturers of all Carbonated Drinks,

SOLE AGENTS FOR PURE

Lake County Champagne, Sweet Cider, Nerve Food
and Cream Phosphate.

T. DAVIS.

H. S. BRIDGE.

H. S. BRIDGE & CO.



Merchant & Tailors,

103 MONTGOMERY ST.,

(UP STAIRS.)

SAN FRANCISCO.

The FINEST LINE of Goods on the Coast.

A GOOD FIT GUARANTEED.

We have sold more goods in Arizona during the past five years, and given better satisfaction than any other house in the trade.

Whenever you meet a really well-dressed gentleman on the streets of Phoenix, or any other town in the territory, you will find that

H. S. BRIDGE & CO.

ARE HIS TAILORS.

Our **Mr. Tom Davis**, or some competent agent, is constantly traveling in Arizona and will at all times be happy to show samples and take your measures.

Fine Shirts, to Order, a Specialty.

L. W. BLINN, President.
E. R. THOMPSON, Second Vice-President.

J. C. ABBOT, First Vice-President.
E. H. HILLER, Cashier.

Incorporated, June 10, 1887.

THE HARTFORD BANKING CO.

PHOENIX, A. T.

CORRESPONDENTS:

CHEMICAL NATIONAL BANK New York, N. Y.
FIRST NATIONAL BANK Chicago, Ill.
BANK OF BRITISH COLUMBIA San Francisco, Cal.
KNAUTH, NACHOD & KUHNE, Foreign Bankers . . . New York, N. Y.

INCORPORATORS:

E. H. HILLER, Investment Securities, Phoenix, A. T.; L. W. BLINN, L. W. Blinn Lumber Co., Arizona; J. C. ABBOT, Secretary and Assistant Treasurer of the Security Co., Hartford, Conn.; E. R. THOMPSON, President, Second National Bank, Norwich, Conn.; A. CRAWFORD, Capitalist, Chicago, Ill.; CHAS. T. WELLS, Cashier, City Bank, Hartford, Conn.; E. W. PARSONS, Auditor, Connecticut Mutual Life Insurance Co., Hartford, Conn.; W. G. ABBOT, Secretary Connecticut Mutual Life Insurance Co., Hartford, Conn.; GEO. A. BOLLES, Capitalist, Hartford, Conn.; J. C. STOCKWELL, Mortgage Loans, Hartford, Conn.

T. L. SCHULTZ.

A. M. FRANKLIN.

SCHULTZ & FRANKLIN, Real Estate Brokers & Auctioneers,

HANDLE

BRILL, BAY VIEW, HIGHLAND, NORTH PARK,
AND OTHER ADDITIONS.

CITY PROPERTY,

—AND—

*Property in All Parts of MARICOPA COUNTY.
A Specialty made of Large Tracts of Land,
with Water, for Colonies.*

Correspondence Solicited and Promptly Answered.

WASHINGTON STREET,

P. O. Box 252.

Phoenix, Arizona.

<http://stores.ebay.com/Ancestry-Found>



Thank you for your order !

This media compilation, our respective advertisements and marketing materials are protected under U.S. Copyright law. The Federal Digital Millennium Copyright Act and various International Copyright laws prohibit the unauthorized duplication and reselling of this media. Infringement of any of these written or electronic intellectual property rights can result in legal action in a U.S. court.

If you believe your disc is an unauthorized copy and not sold to you by **Rockyguana** or **Ancestry Found** please let us know by emailing at

<mailto:dclark4811@gmail.com>

It takes everyone's help to make the market a fair and safe place to buy and sell.